

August 2025



Artist impression

# Central South Construction Precinct Tunnelling Site Update

 South Road between Nottingham Crescent and Glengarry Avenue, Glandore

## Site establishment underway

The River Torrens to Darlington (T2D) Project is South Australia's largest infrastructure project and will create a non-stop South Road between Gawler and Old Noarlunga.

Major works will commence at the Central South Construction Precinct in the coming months. The Central South Construction Precinct will be located on South Road between Nottingham Crescent and Glengarry Avenue in Glandore. Once constructed, this site will serve as the Tunnel Boring Machine (TBM) retrieval site for the Southern Tunnels.

## What's happening

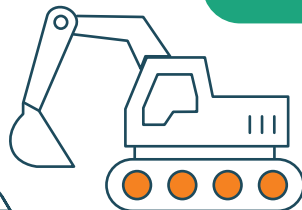
Preparations to establish the Central South Construction Precinct are progressing, with our site offices, amenities, and workforce parking within the construction site scheduled to be installed and constructed in August.

## Stay informed



Register for email updates on upcoming works in your area. Scan the QR code and enter your details.

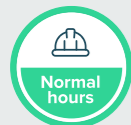
[T2D.sa.gov.au](https://T2D.sa.gov.au)





# Key works in your area

## When are we working?



### Standard construction hours

7am to 7pm, Monday to Saturday  
9am to 7pm, Sunday works may be undertaken. We will advise in advance, if required



### Standard hours and night works

These works will be undertaken during standard and night work hours as required

## Night works

Night works are required to deliver the T2D Project for several reasons including:

- ➔ Keeping traffic moving on South Road while construction takes place
- ➔ Ensuring concrete pours can be undertaken in one continuous pour to ensure structural integrity
- ➔ Minimise the impact on utilities like water, sewer, gas, and electricity

Night works will also be integral to the operation of TBMs once tunnelling commences.

During night works, our crews will work to minimise noise, vibration and light spill at the source. We appreciate your patience while we work to deliver the Project.

## Service relocation works



Works will take place during standard construction hours from August 2025

Some utility services will need to be relocated as part of the site preparation works.

In August, this will include telecommunication relocations within Glandore. Some local traffic detours may be required, however local access will be maintained. Short-term footpath diversions will also be required so please follow signage to move through the work areas safely.

If these, or other utility works, require interruptions to your services, your providers will notify you in advance.

## Site establishment works



Works will occur during standard construction hours

Site establishment works will continue for the Central South Construction Precinct office and compound on South Road.

This office be located here until project completion. A location map is provided on the next page.

### Key activities include:



Construction of workforce parking within the site compound



Installation of fencing, site office and essential utilities



Ground excavation, levelling and compaction to stabilise the compound

Once the office is constructed, approximately 170 workers are set to join us on site, with parking within the site for Project staff and workforce.



To safely carry out utility relocation works, some trees and vegetation are required to be removed.

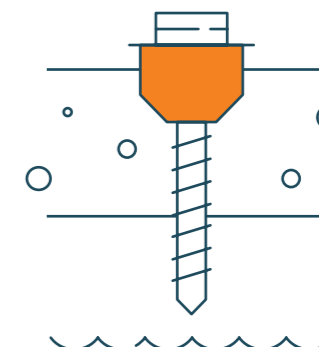
## Investigations and survey works



These works will be undertaken during standard and night work hours as required

You may notice works taking place in the area to investigate soil and groundwater conditions, confirm underground utility locations, and mark survey points.

If these works are planned to take place adjacent to your home or business, a member of the Project team will undertake a door knock and let you know the timings.



Ground investigations can include the use of a drill rig and may take several days or nights to complete.

## What you may notice

### Noise and vibration

Some of these works will generate some periods of medium to high-level noise and vibration. Every effort will be made to minimise disturbance to residents and businesses. Noise and vibration monitoring will take place around the sites, and the team will work to minimise these impacts at the source.

A compaction roller is being used to stabilise the ground



## Local traffic changes



Works to establish the Central South Construction Precinct site require changes to local roads and footpaths, as we work on establishing the construction site boundaries.

To maintain pedestrian and cyclist connectivity to and from South Road, Pleasant Avenue will remain open for pedestrians and cyclists. Traffic controllers will be present at the heavy vehicle crossing on Pleasant Avenue to ensure pedestrian safety during peak periods when there are heavy vehicle movements.



To learn more about these local changes please scan the QR code or visit the link below

[link.caapp.com.au/AGLAN](http://link.caapp.com.au/AGLAN)



Please refer to the map above for detour routes.





# A non-stop South Road



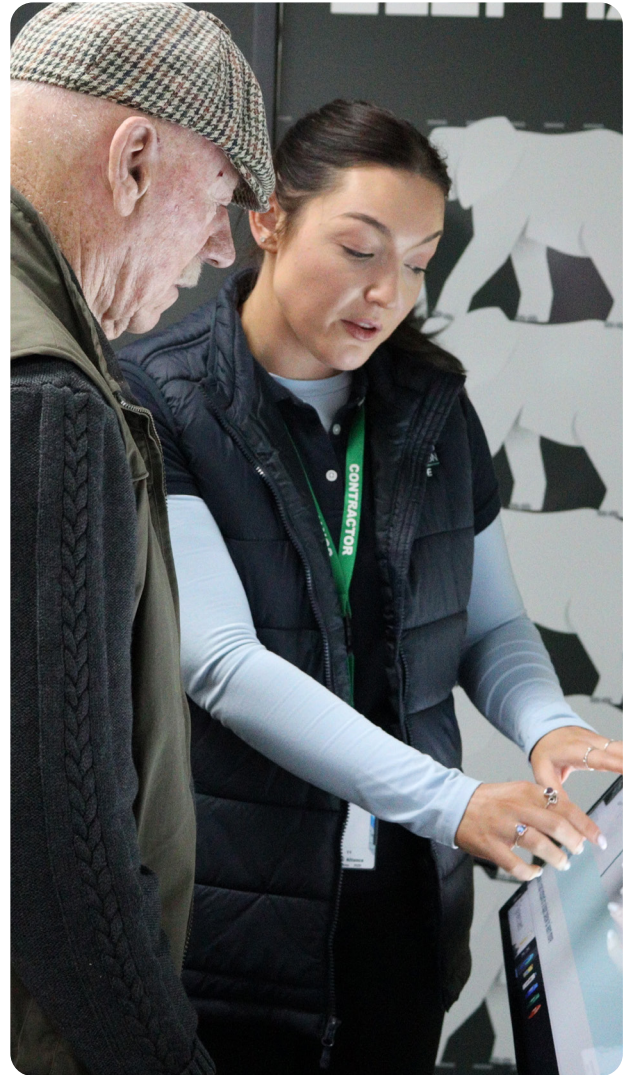
## Community Reference Group

We are currently seeking expressions of interest to join a Construction Community Reference Group (CRG) for your area. The CRG is a way to stay informed about the Project, provide feedback, and share local knowledge.

### Join your local CRG



Scan the QR code or visit the website by **Wednesday 27 August 2025** to learn more or express interest.  
[link.caapp.com.au/CCRG](https://link.caapp.com.au/CCRG)



## Contact Us

- Phone:** 1300 951 145
- Email:** [info@t2dalliance.com.au](mailto:info@t2dalliance.com.au)
- In person:** Community Information Centre, 290 South Road, Hilton
- Opening Hours:**  
Please refer to the T2D website



## Learn more

Scan the QR code or visit our website via the link below to learn more about South Australia's biggest-ever road project.



Australian Government  
**BUILDING AUSTRALIA**



Government of South Australia  
Department for Infrastructure and Transport

**SA IS BUILDING**  
→

Delivered by  
**TORRENS TO DARLINGTON**  
**ALLIANCE**

**T2D**  
.sa.gov.au