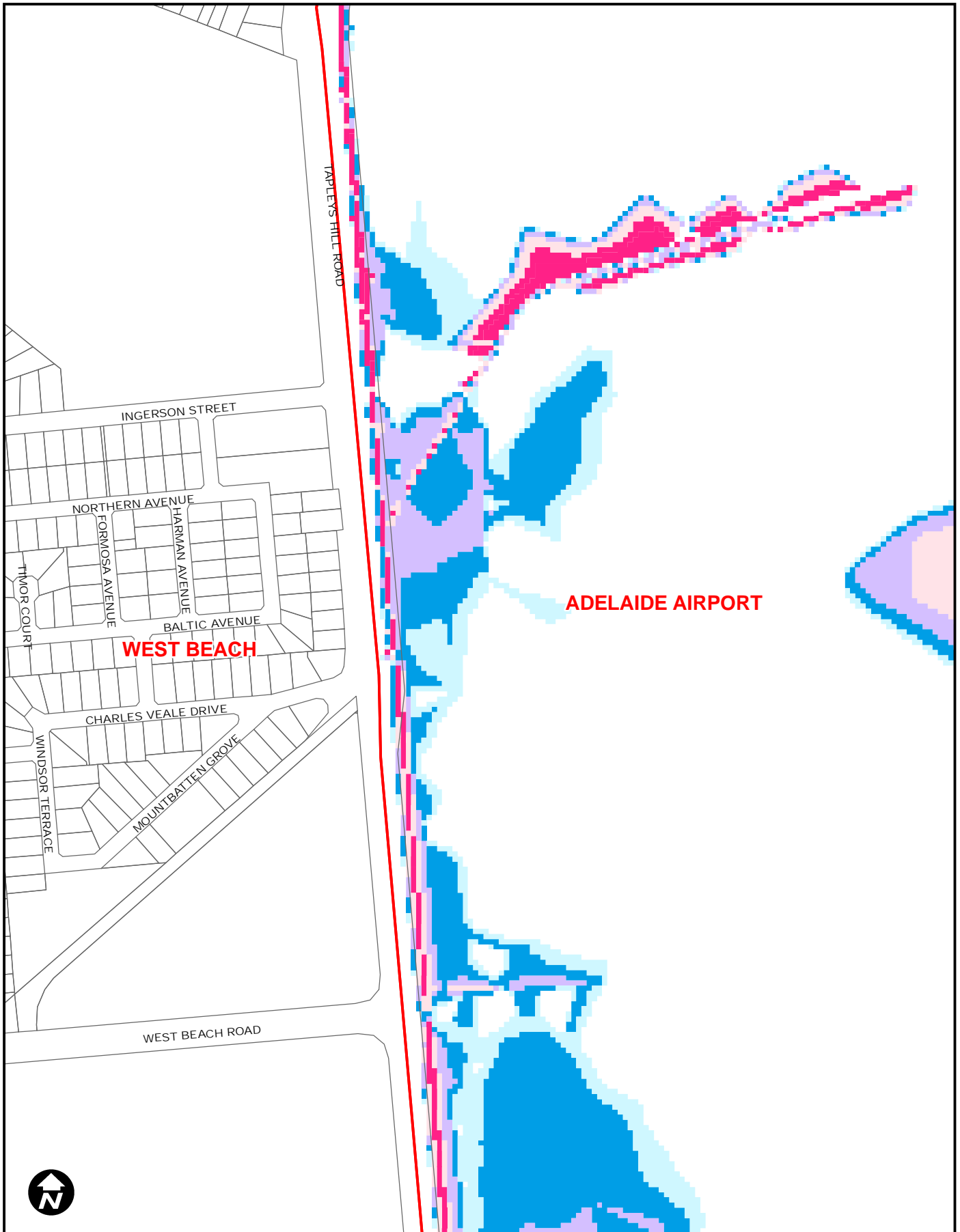


# Brown Hill and Keswick Creeks Floodplain Inundation Map 1:100 year Flood



- Light Blue (Depth less than 0.1 metre)
- Dark Blue (Depth 0.1 metre to 0.25 metre)
- Purple (Depth 0.25 metre to 0.5 metre)
- Light Pink (Depth 0.5 metre to 1.0 metre)
- Dark Pink (Depth greater than 1 metre)

**Disclaimer**

West Torrens Council accepts no liability for any reliance placed on the validity and accuracy of data in this publication. While care and effort has been taken in the presentation of this data it is only to be used for demonstration purposes.