

Thebarton Technology Hub Interpretive and Wayfinding

Concept Design

City of West Torrens

Issue 01
JPE 17154
9 September 2015



Possibilities

a library of ideas and reference

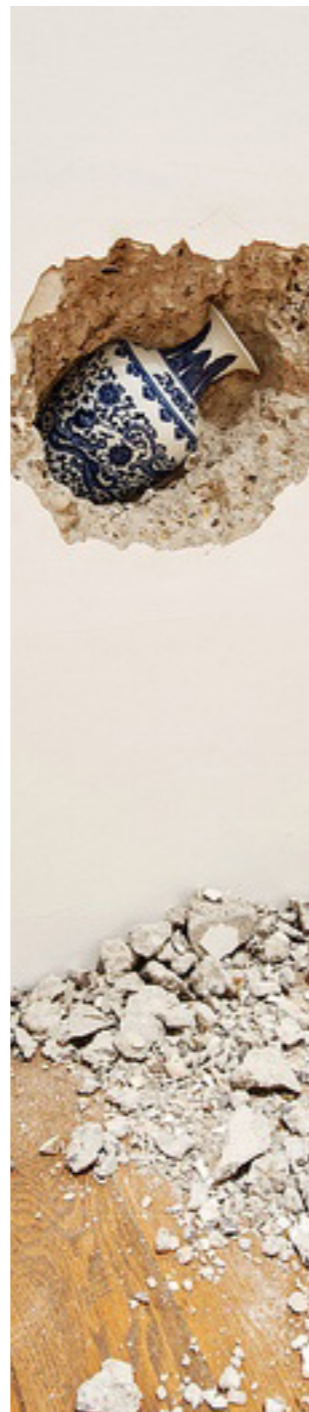
Content = materiality

hinged on the industrial heritage of the area

‘its past is its future ... what is old is new’

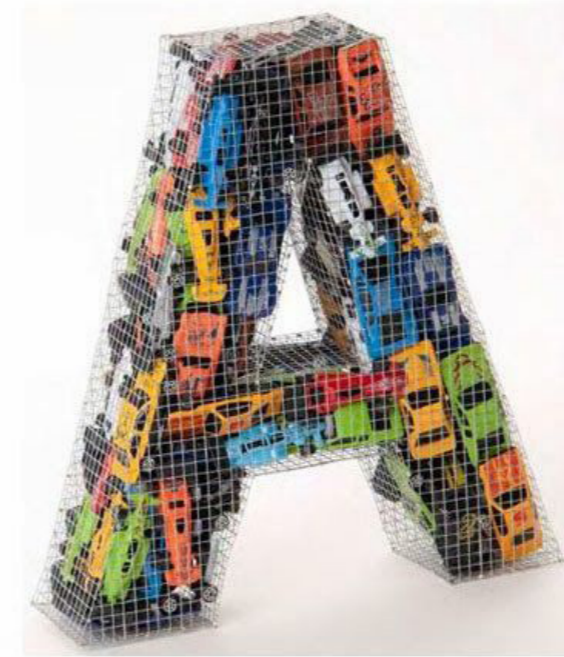
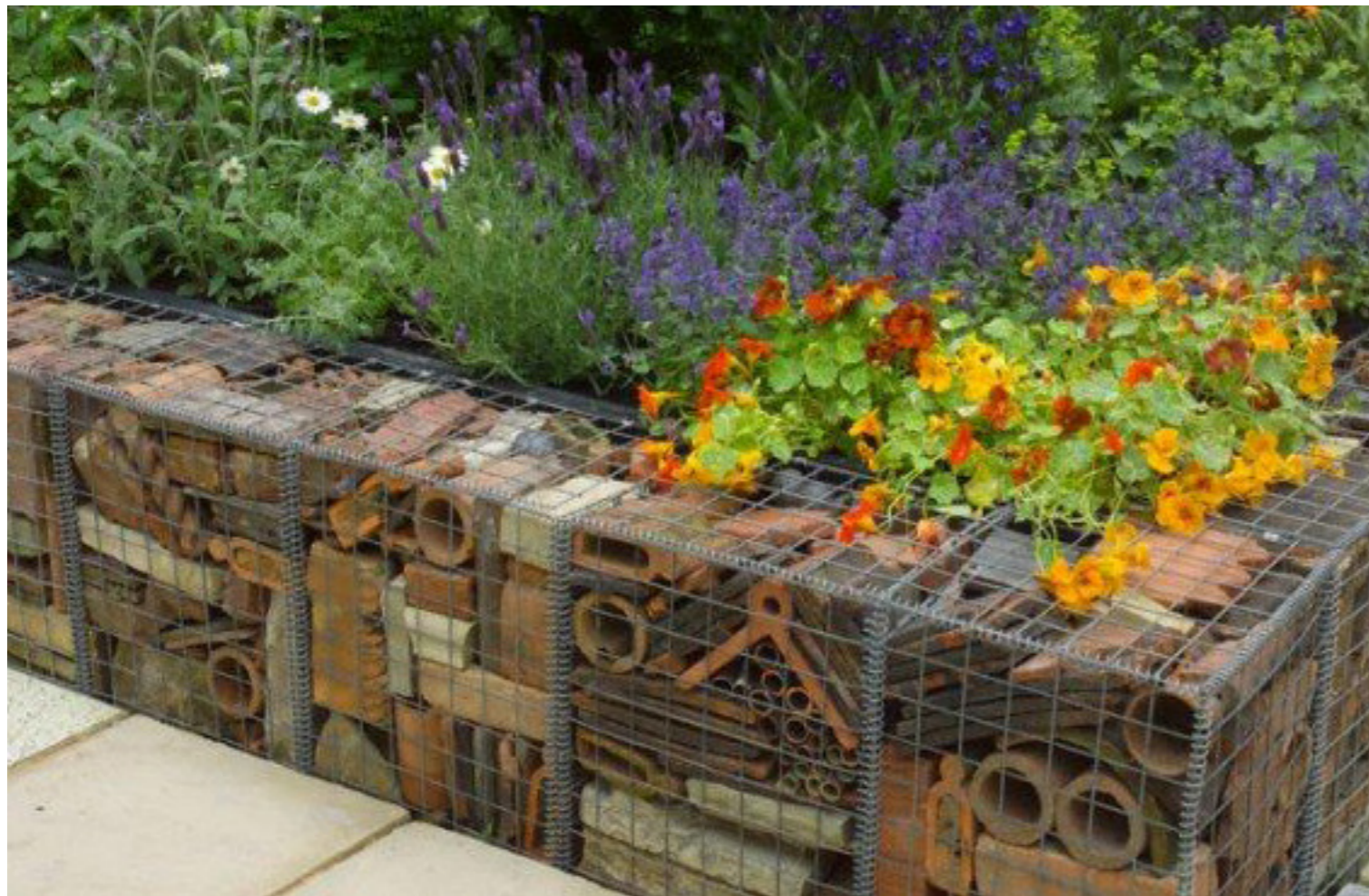
Artefacts, objects, collections

fragments, assemblies, hidden, compressed, repeated



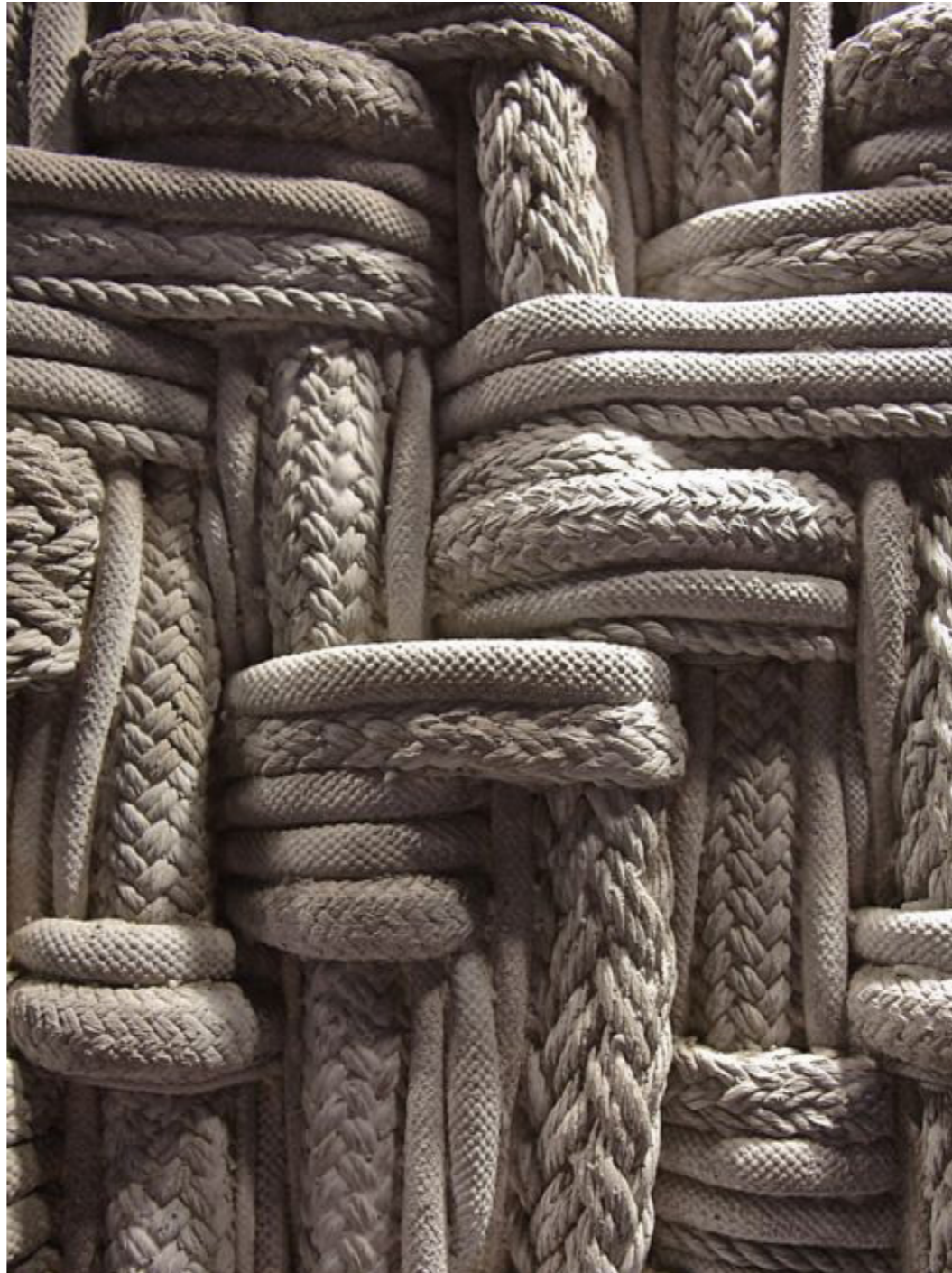
Gabions

containing and displaying artefacts, objects, collections



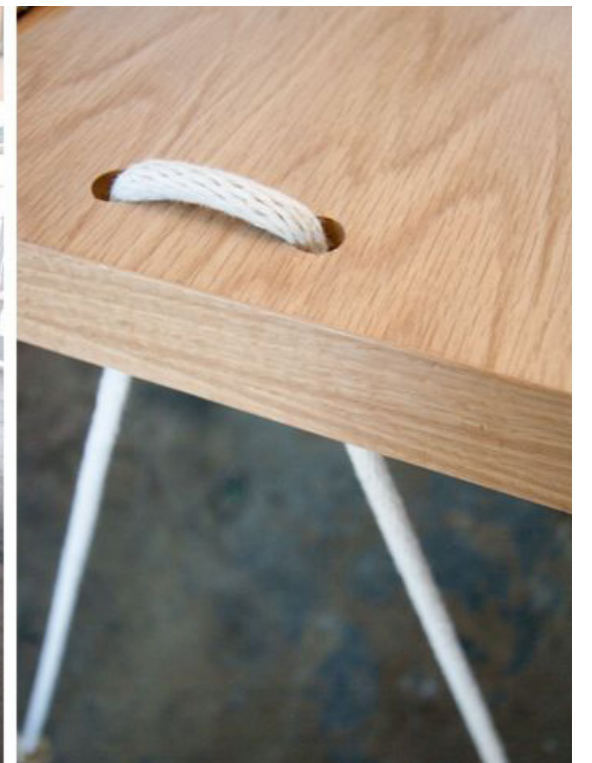
Rope

enhancing urban environments; seats, walls



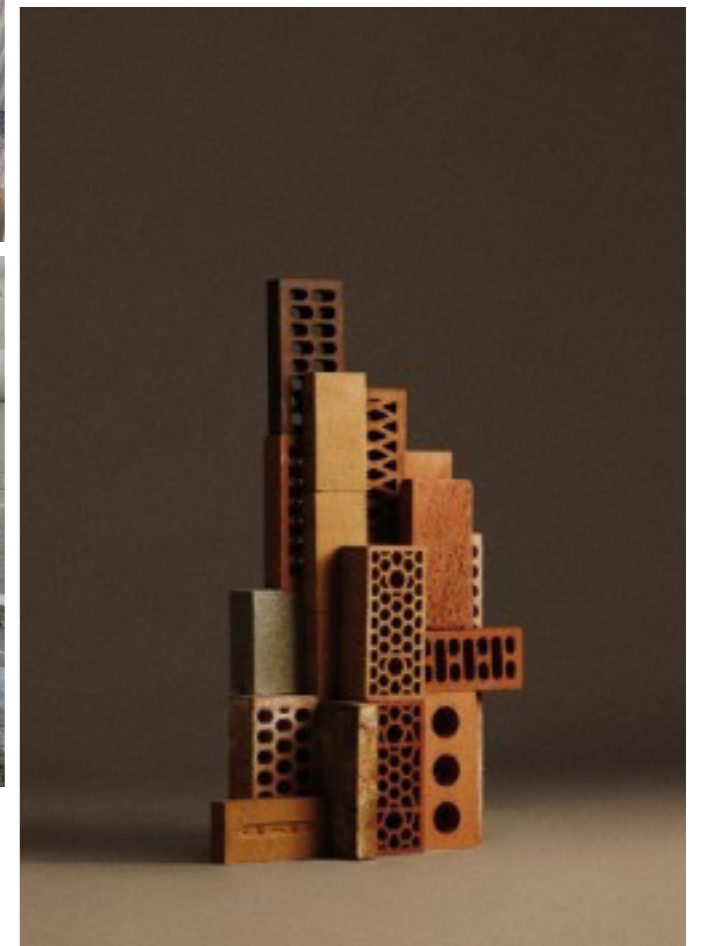
Rope

enhancing urban environments; seats, walls

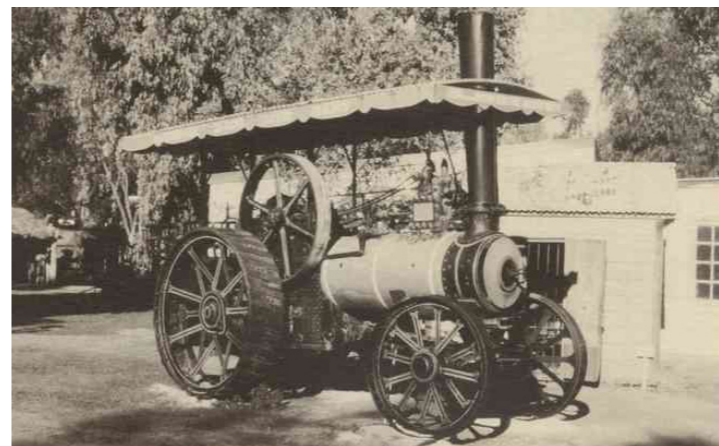
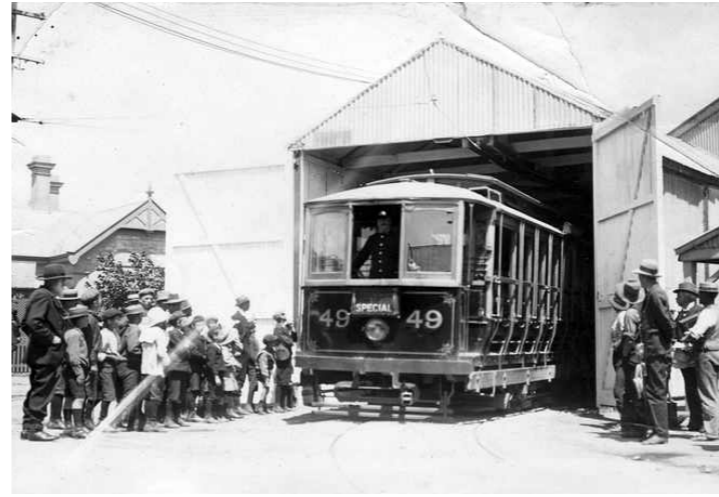
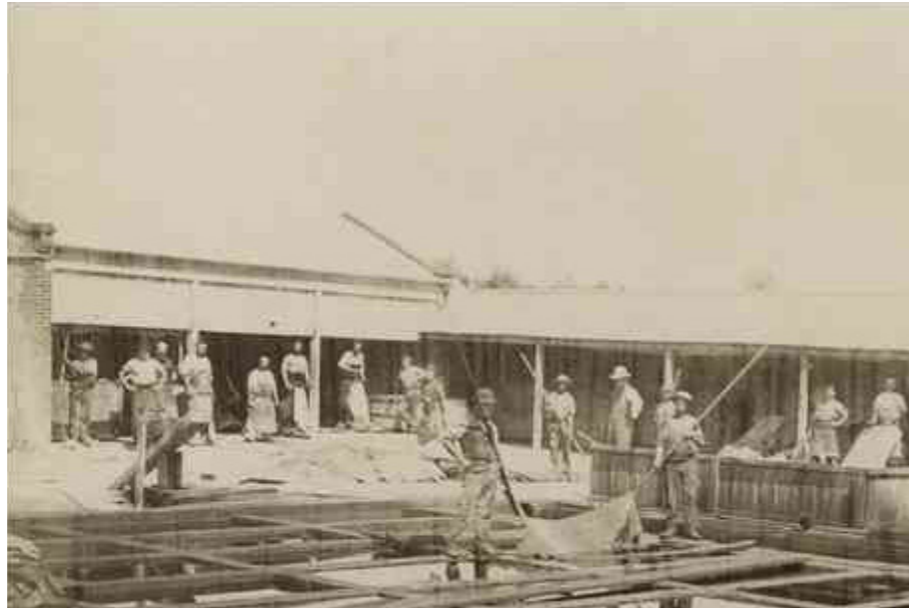


Materials

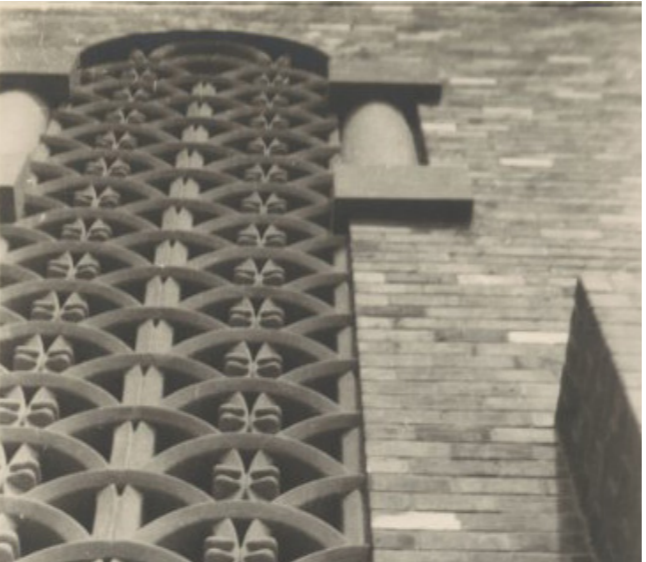
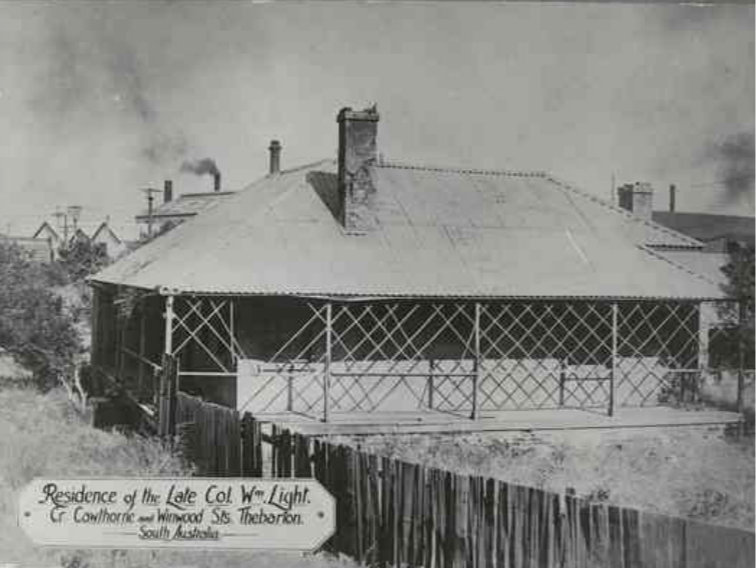
to align with the gritty urban nature of the precinct



Historical reference



Historical reference



Public engagement

‘preserve its essence ... develop its future’

Urban elements

which invite participation and activate the spaces

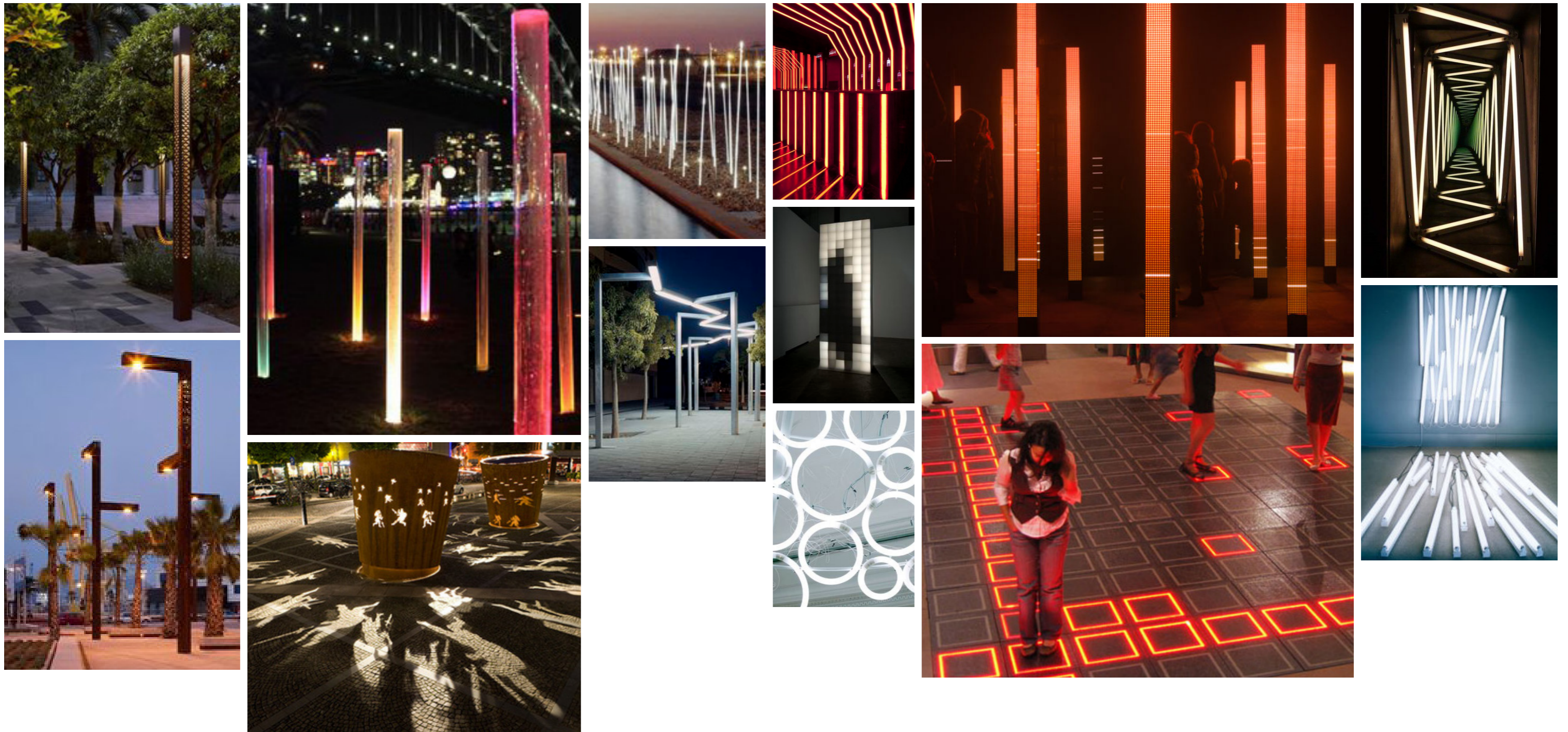


Messages and stories

incorporated into urban elements



Lighting and illumination



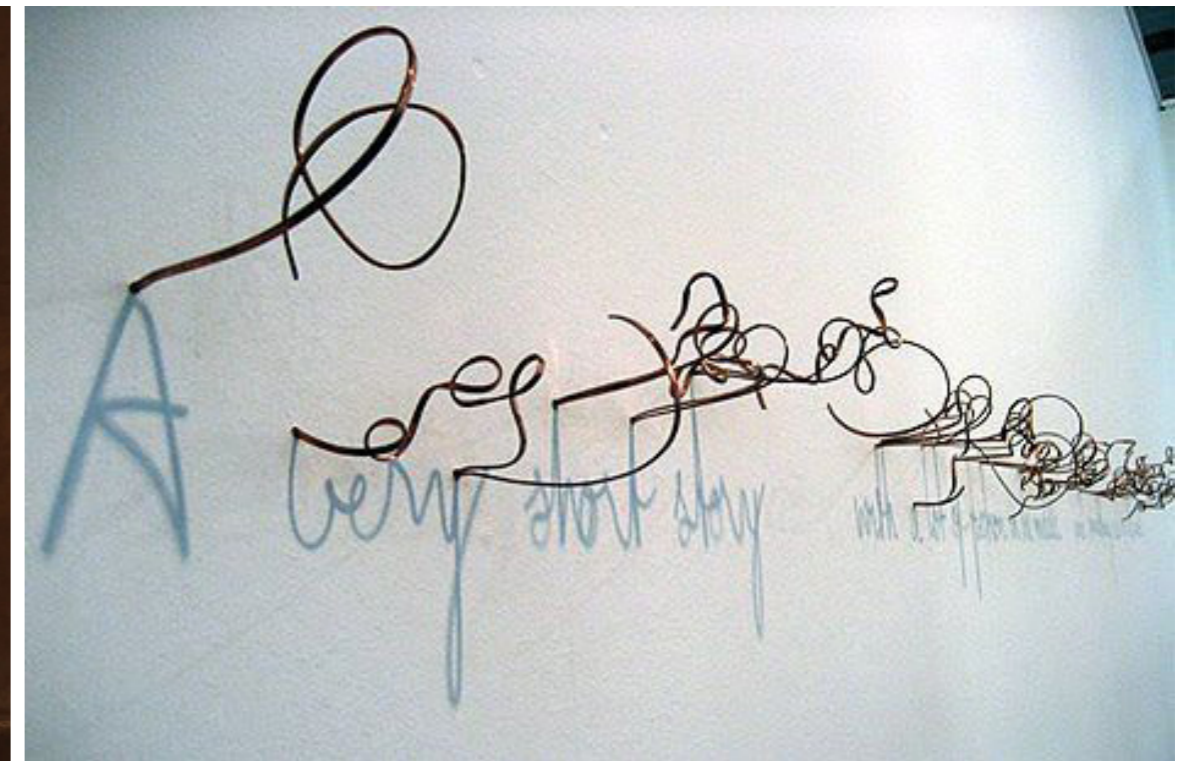
Messages and stories

incorporated into urban elements and the built environment



Messages and stories

incorporated into urban elements and the built environment

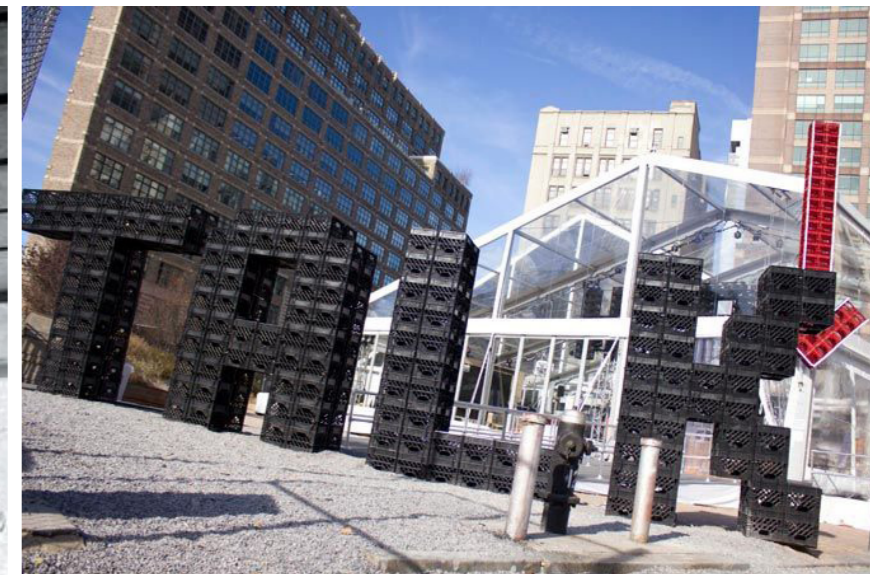


A WIND THAT ROSE THOUGH NOT A LEAF
IN ANY FOREST STIRRED-
BUT WITH ITSELF DID COLD COMMUNE
BEYOND THE REALM OF BIRD.
A WIND THAT WOKE A LONE DELIGHT
LIKE SEPARATION'S SWELL-
RESTORED IN ARCTIC CONFIDENCE
TO THE INVISIBLE.



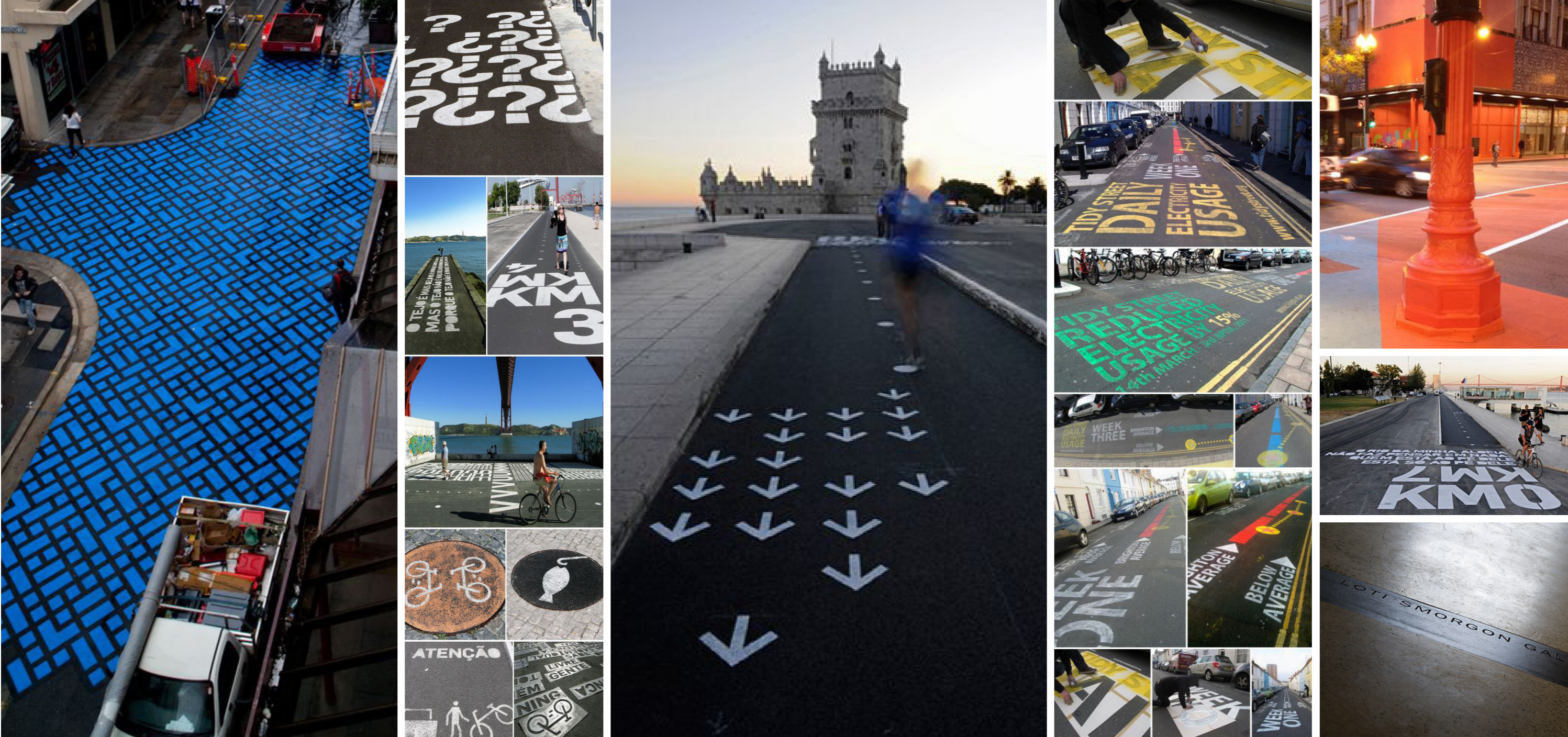
Messages and stories

incorporated into urban elements and the built environment



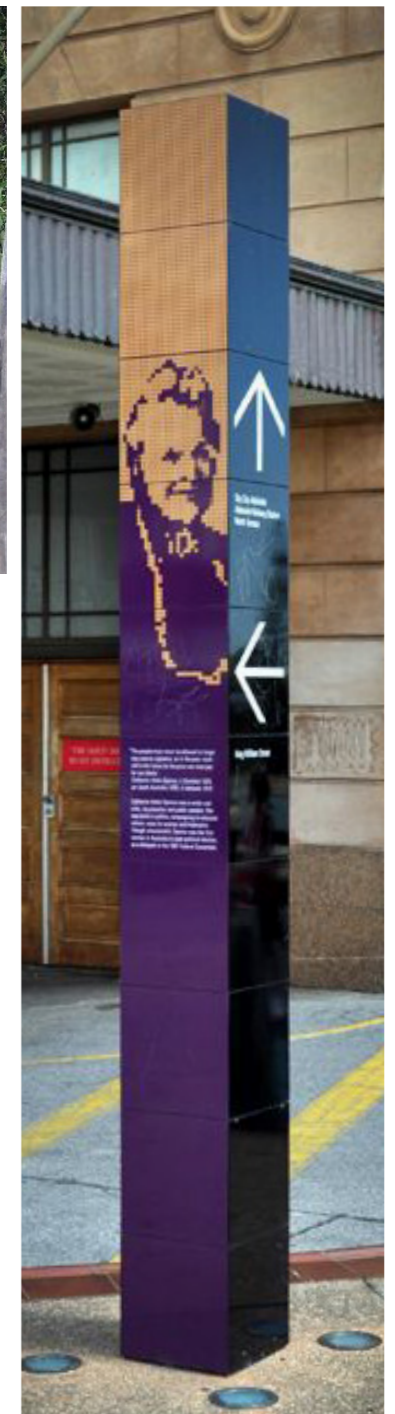
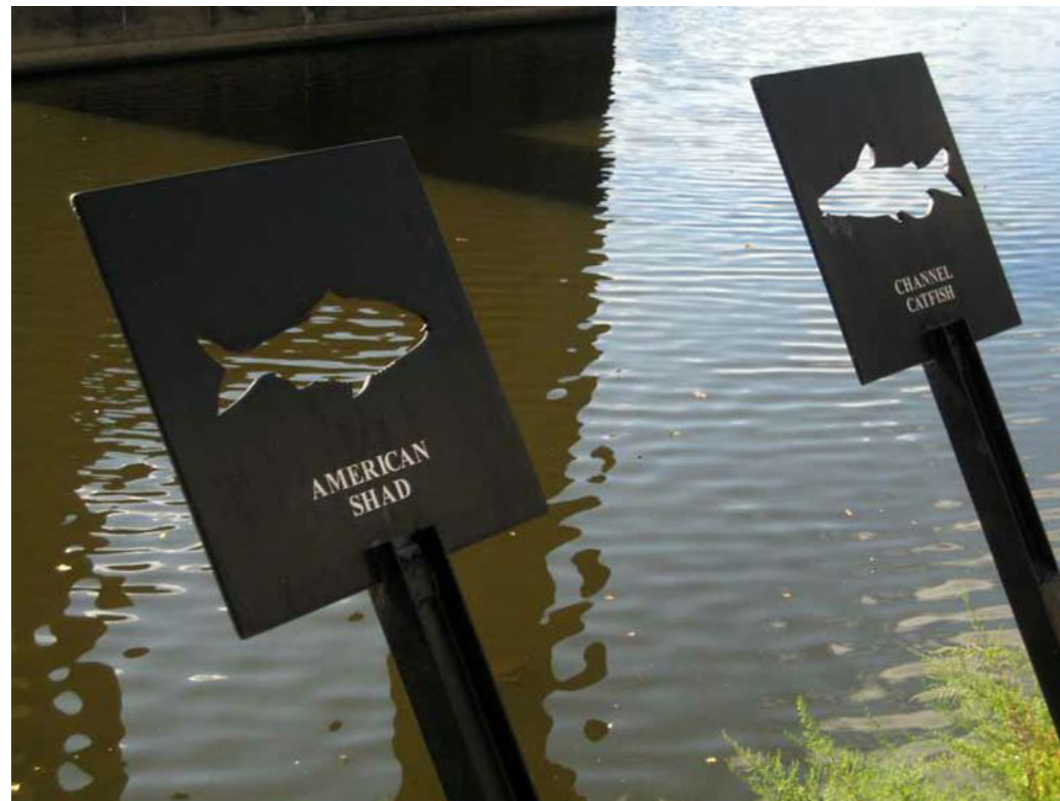
Ground plane

activated with patterns or messages



Signage

wayfinding, interpretive and combined



Realisation

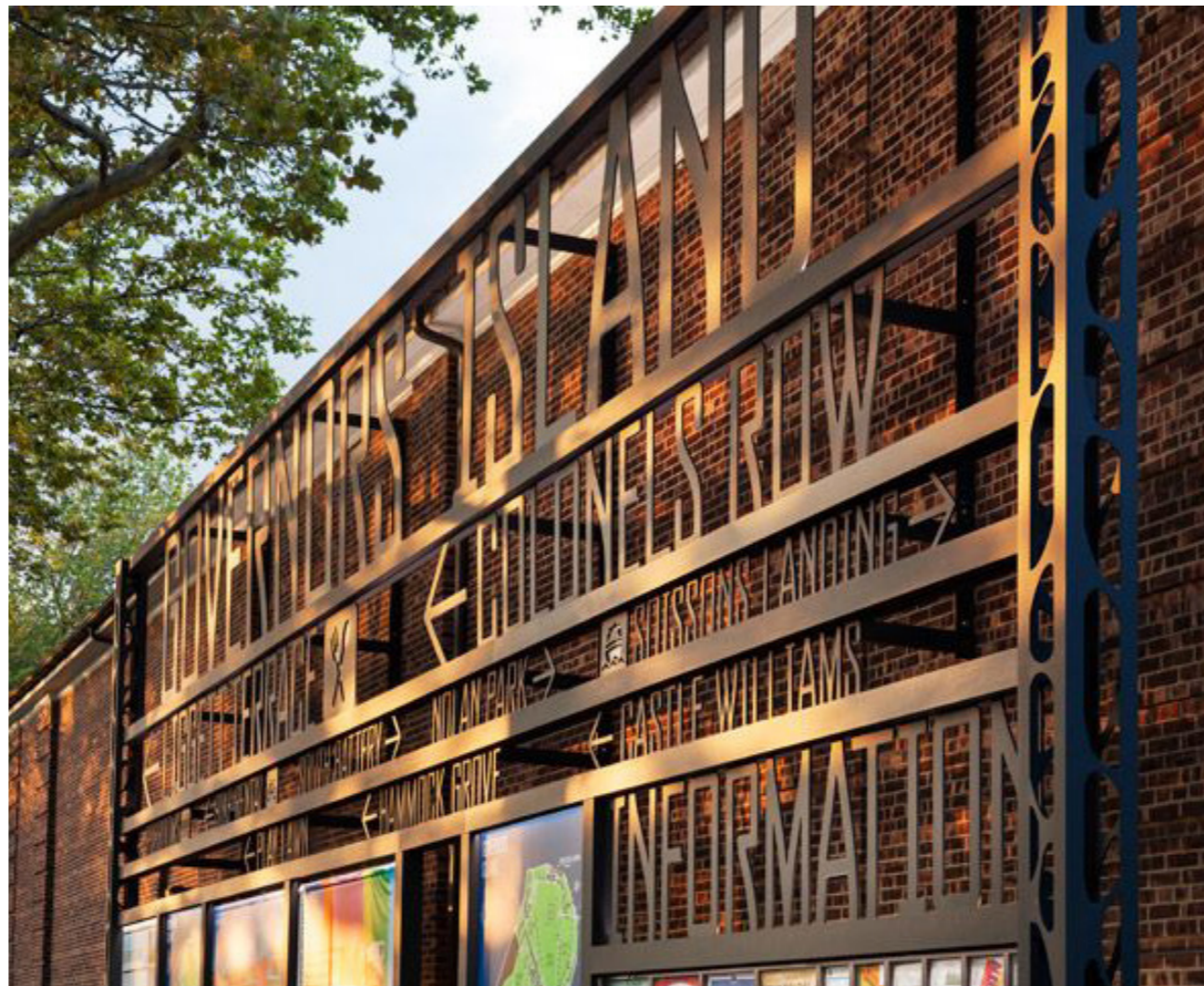
The following proposals can be implemented throughout the Thebarton Technology Hub
Specific examples relevant to the Holland Street precinct are illustrated

Interpretive

‘the road less travelled ... hidden gems’

Framework

to hold interpretive panels, artefacts and objects, large scale text information
allows base building / urban landscape to be visible



Framework

potentially located throughout the Thebarton Technology Hub

exemplar locations shown



Framework

to hold interpretive panels, artefacts and objects, large scale text information
allows base building / urban landscape to be visible



framework
exposes
building /
wall / fence
beyond



exemplar for Holland Street precinct

Buildings and walls

Painted walls with exposed brick patterns, painted or sandblasted imagery



Buildings and walls

potentially located throughout the Thebarton Technology Hub

exemplar locations shown



Buildings and walls

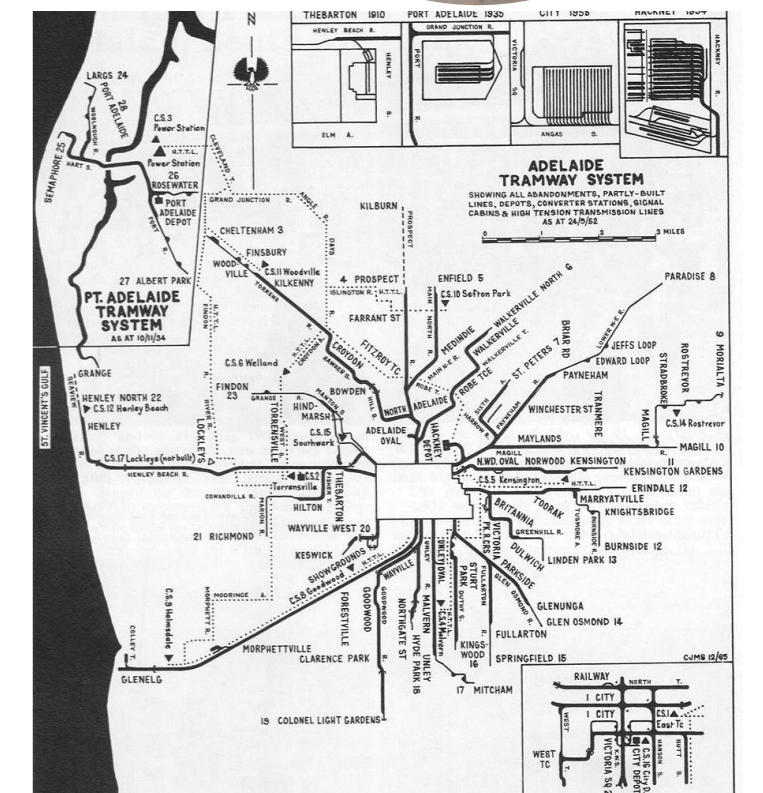
Painted walls with exposed brick patterns, painted or sandblasted imagery



exemplar for Holland Street precinct



paint removed to expose brickwork

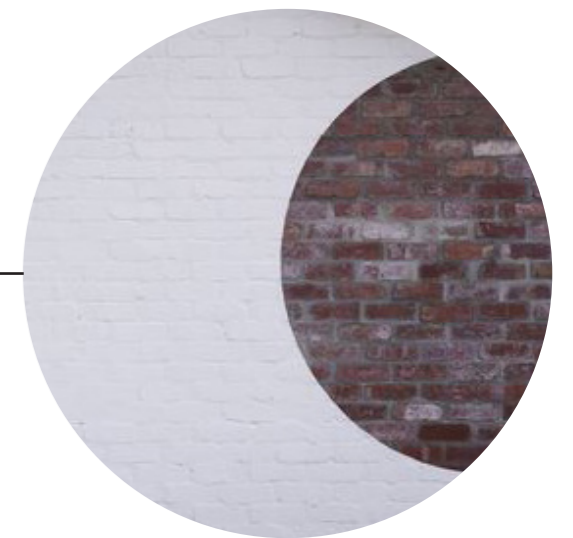


Buildings and walls

Painted walls with exposed brick patterns, painted or sandblasted imagery



exemplar for Holland Street precinct



paint removed to expose brickwork

Fences

activated or opened up to expose activities behind fences



Fences

potentially located throughout the Thebarton Technology Hub

exemplar locations shown



Fences

activated or opened up to expose activities behind fences



exemplar for Holland Street precinct – brewery fence



painted on
corrugated
iron

Fences

activated or opened up to expose activities behind fences



exemplar for Holland Street precinct – brewery fence

cut through
corrugated
iron

view through to industrial landscape
of brewery beyond

Freestanding large letterforms



exemplar for Holland Street precinct

extruded
letterforms
which form
a fence



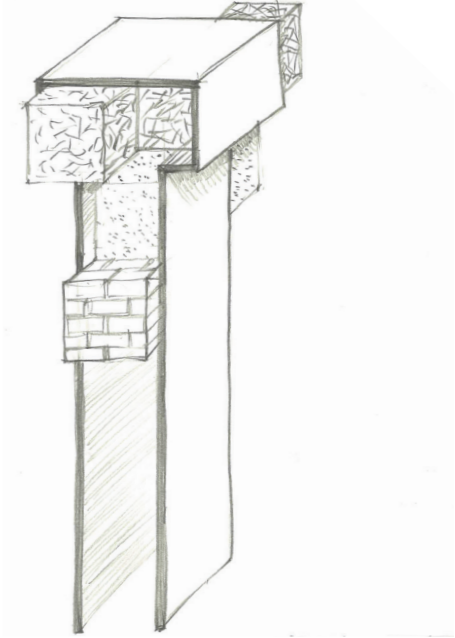
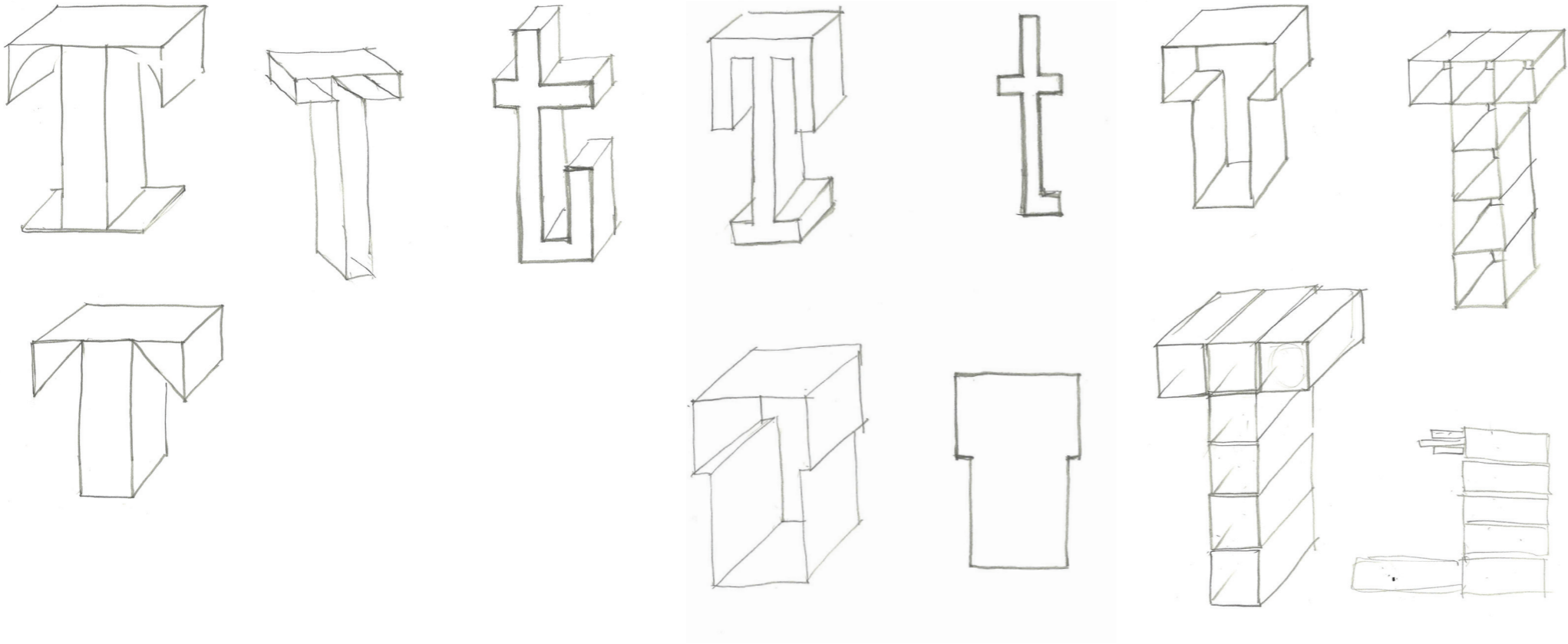
Wayfinding

The following proposals are urban markers with placemaking qualities, as well as interpretive content

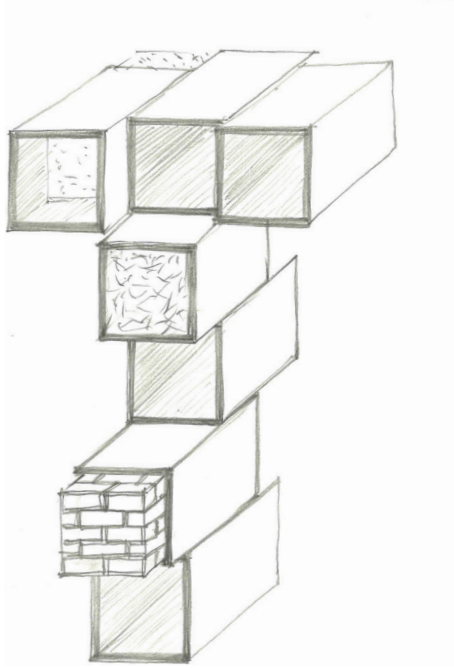
‘don’t lose the smelly armpit of the area’

Hub gateway

Exploration of the letter T



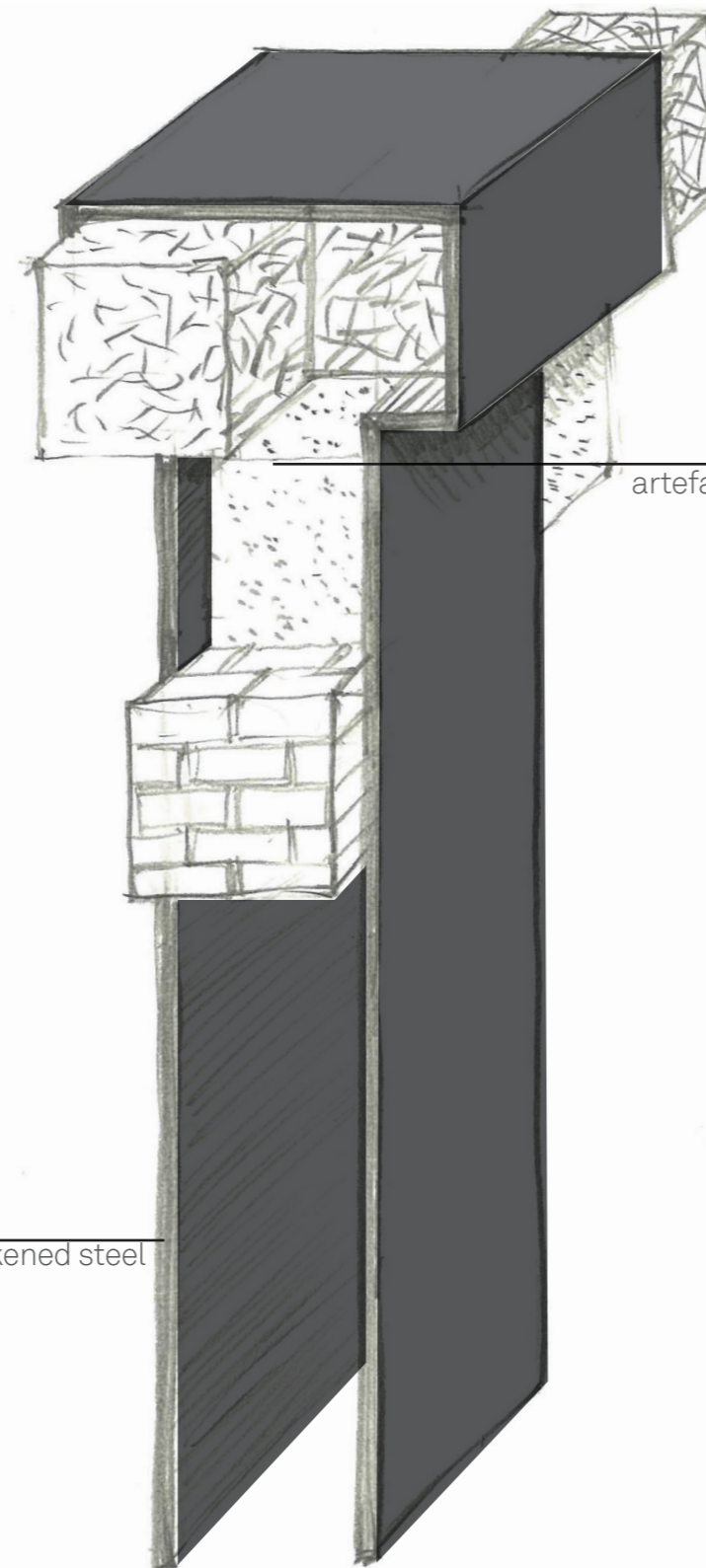
Option 1



Option 2

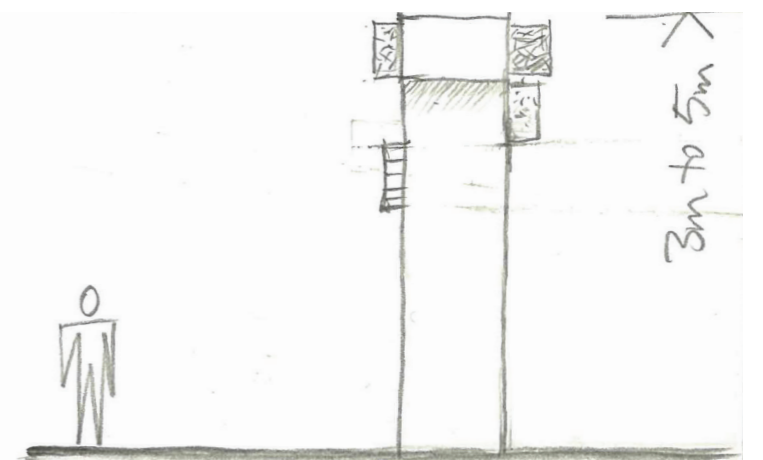
Option 1

Hub gateway



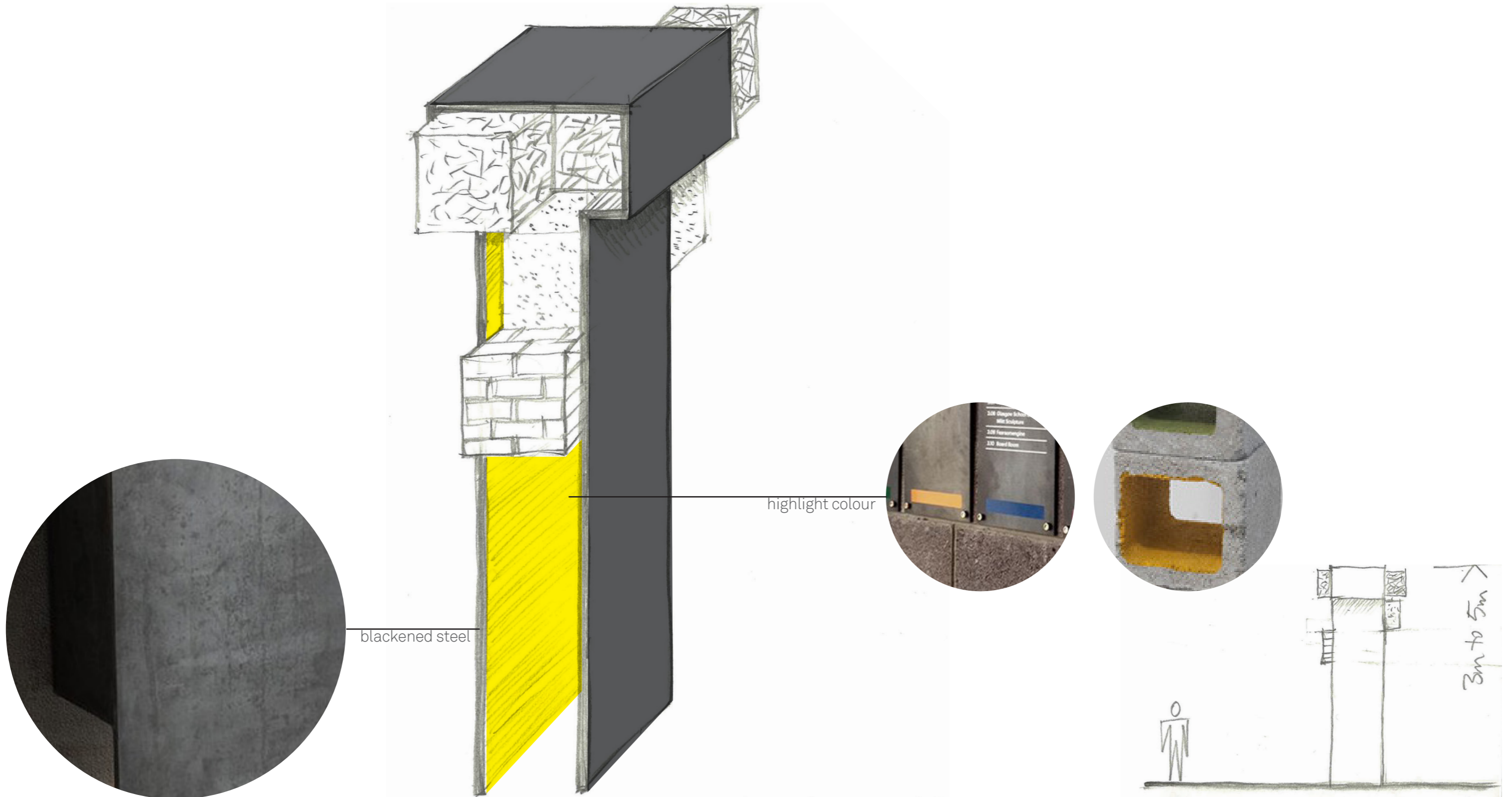
blackened steel

artefacts and objects



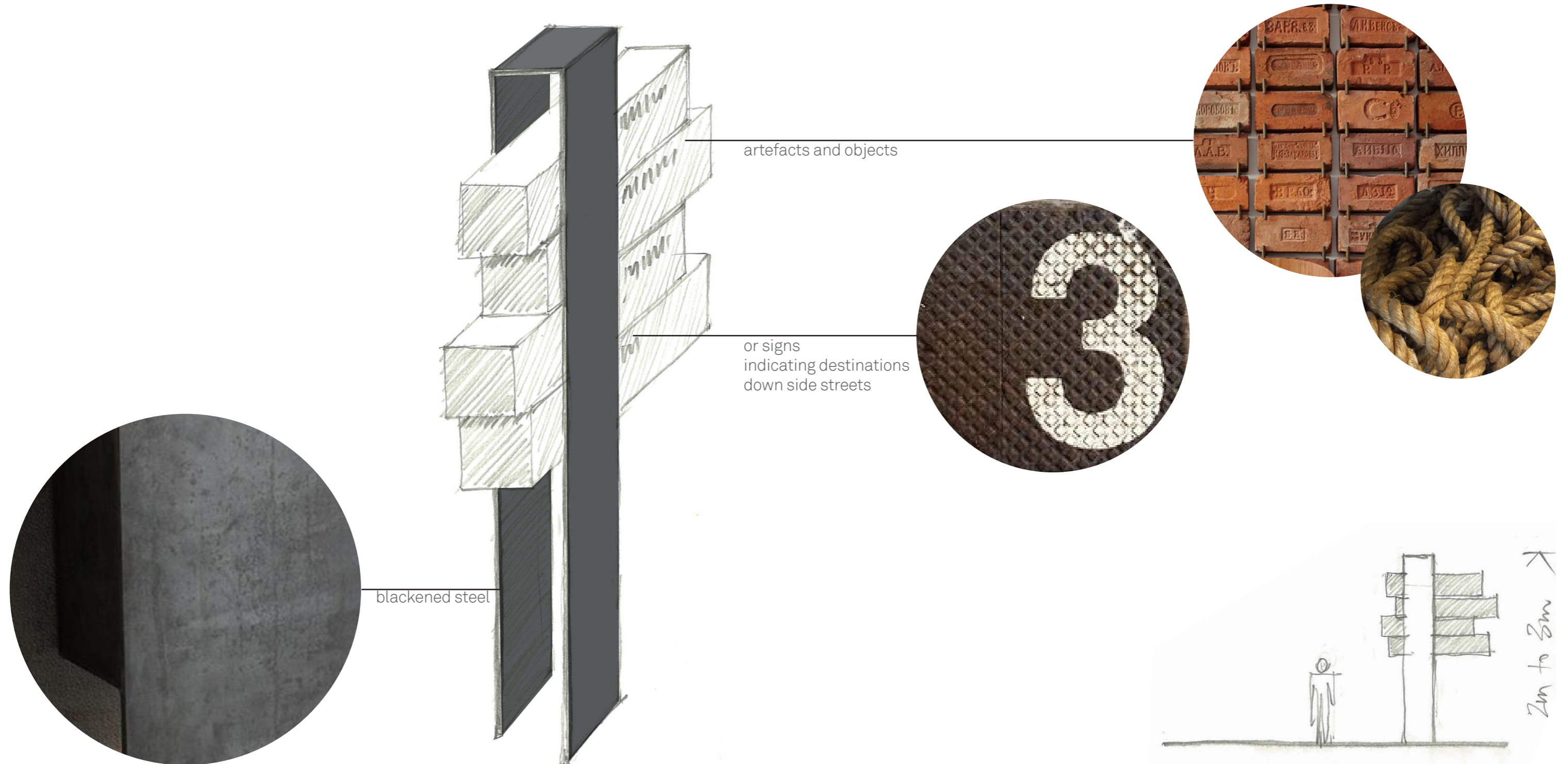
Option 1

Hub gateway



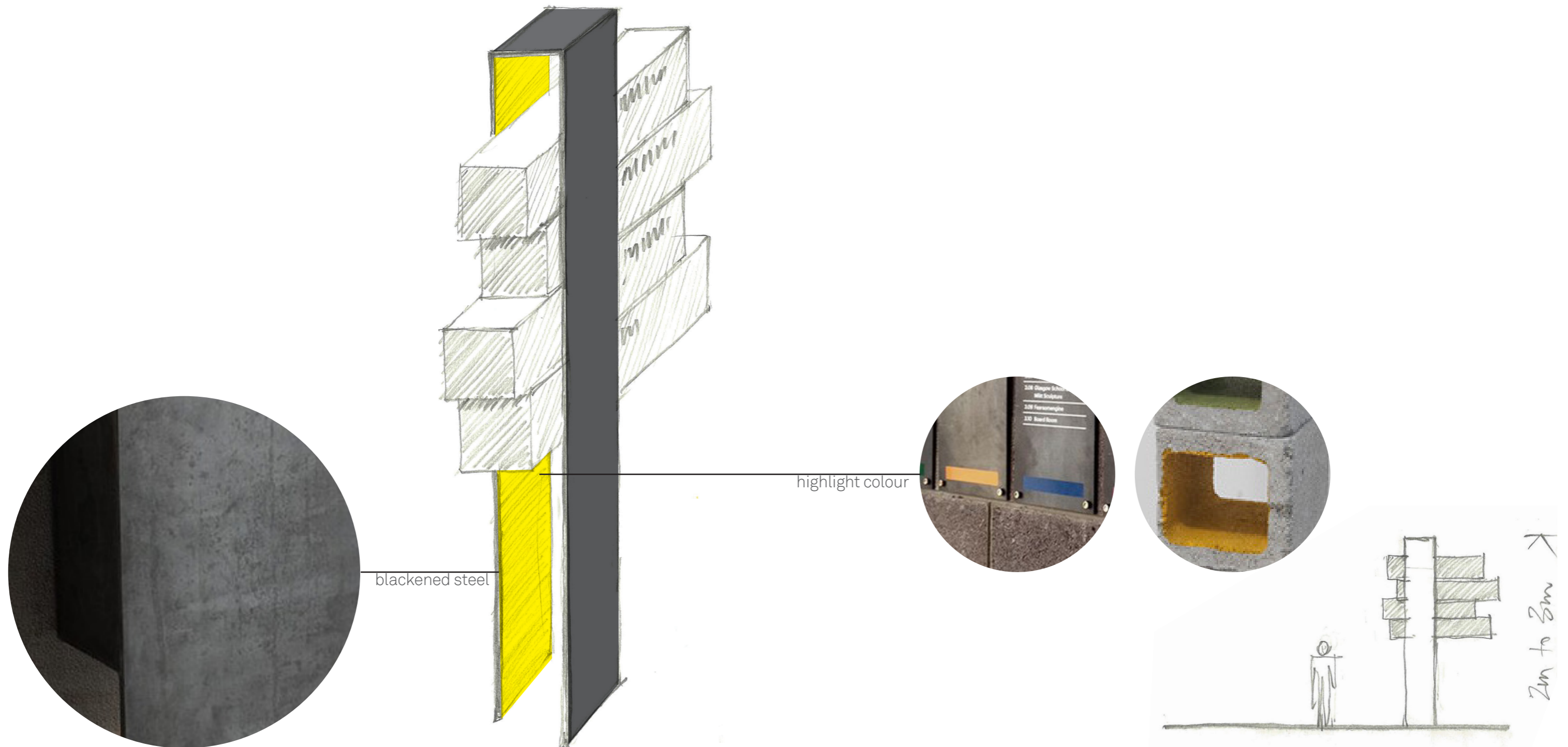
Option 1

Internal precinct gateway



Option 1

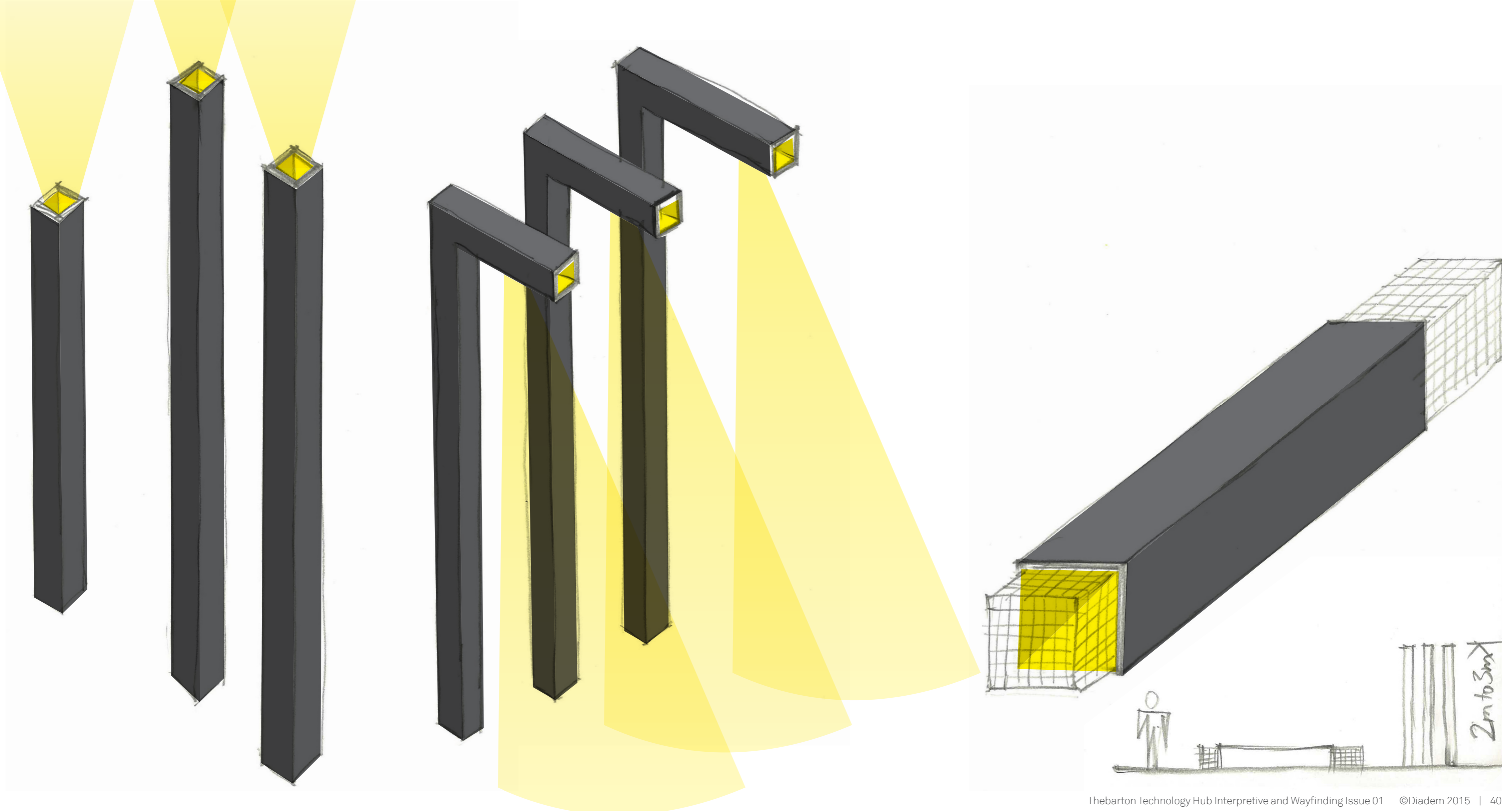
Internal precinct gateway



Option 1

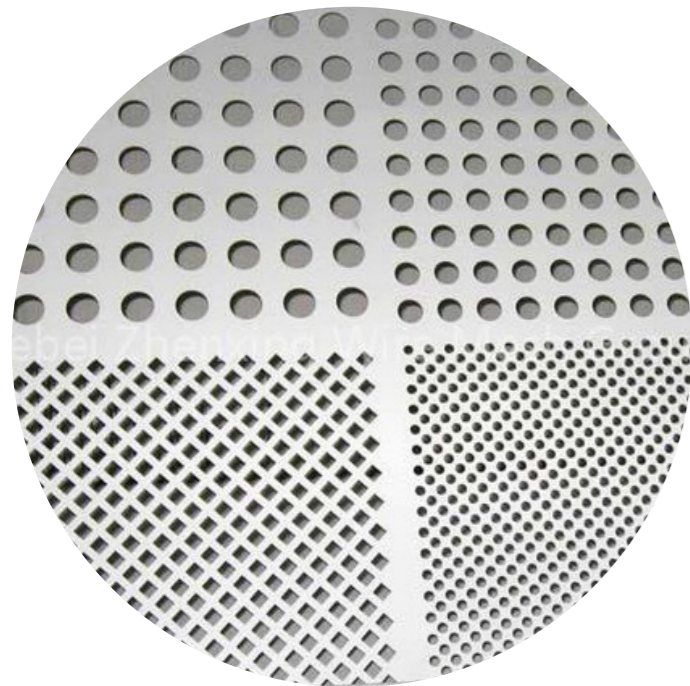
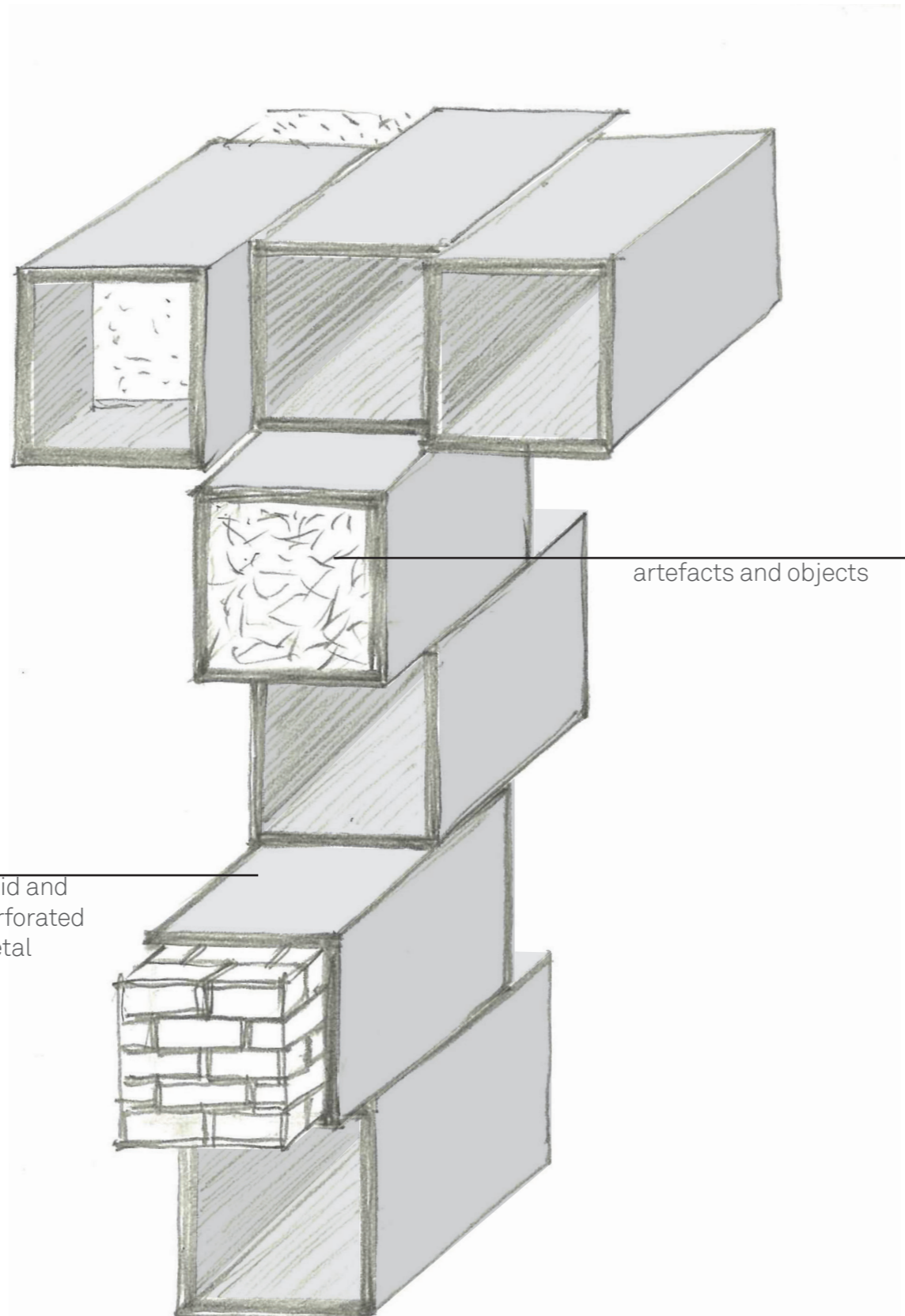
Urban elements

Lights and seats



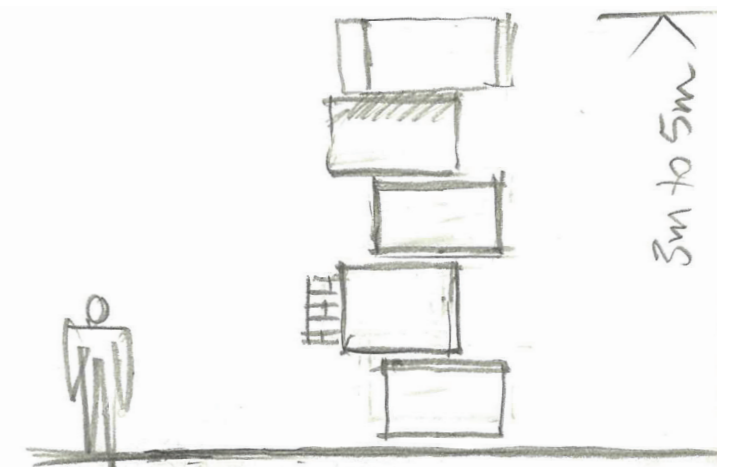
Option 2

Hub gateway



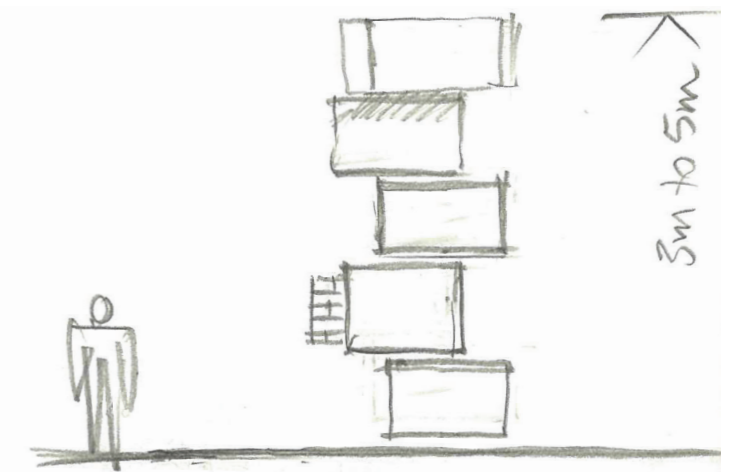
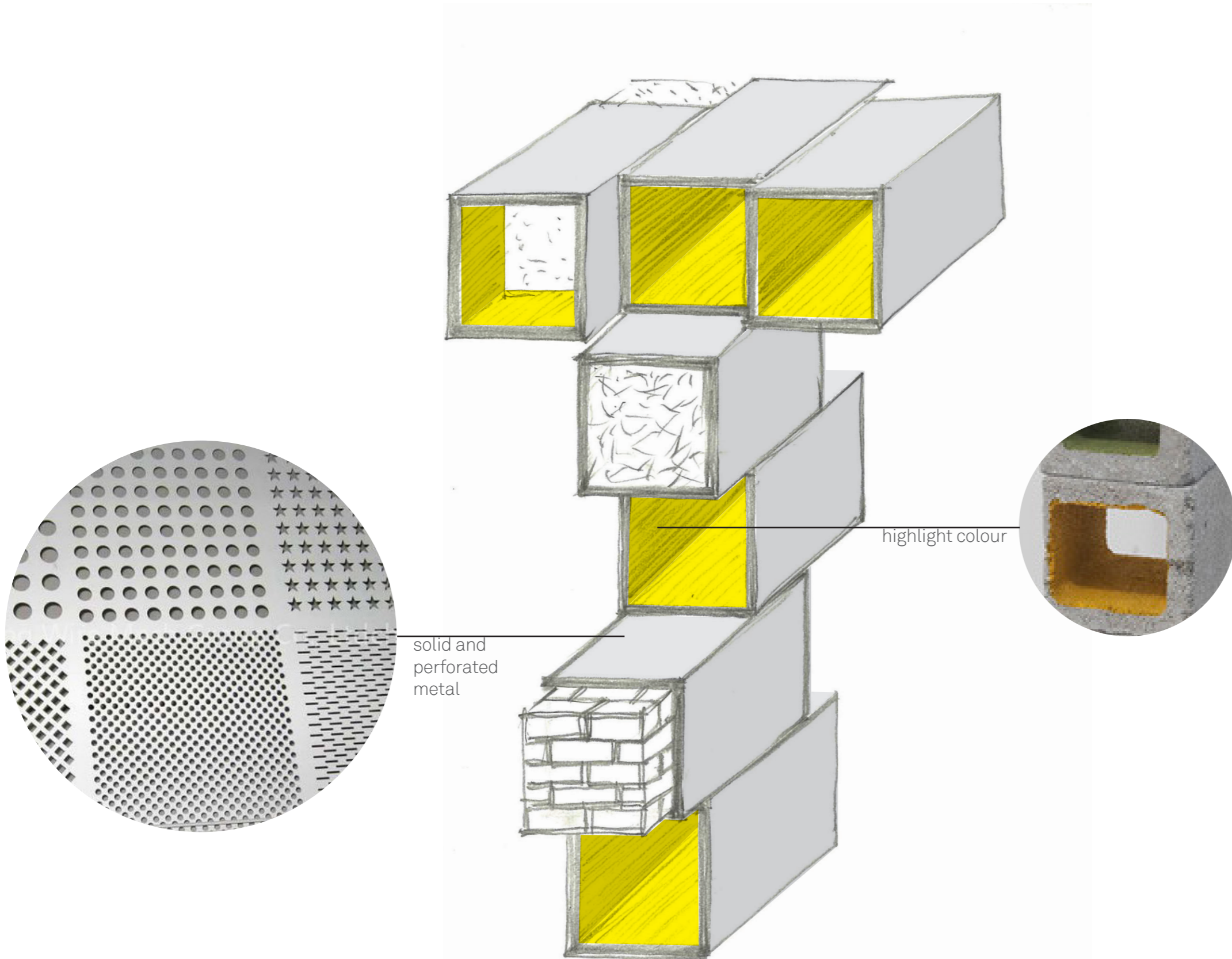
solid and perforated metal

artefacts and objects



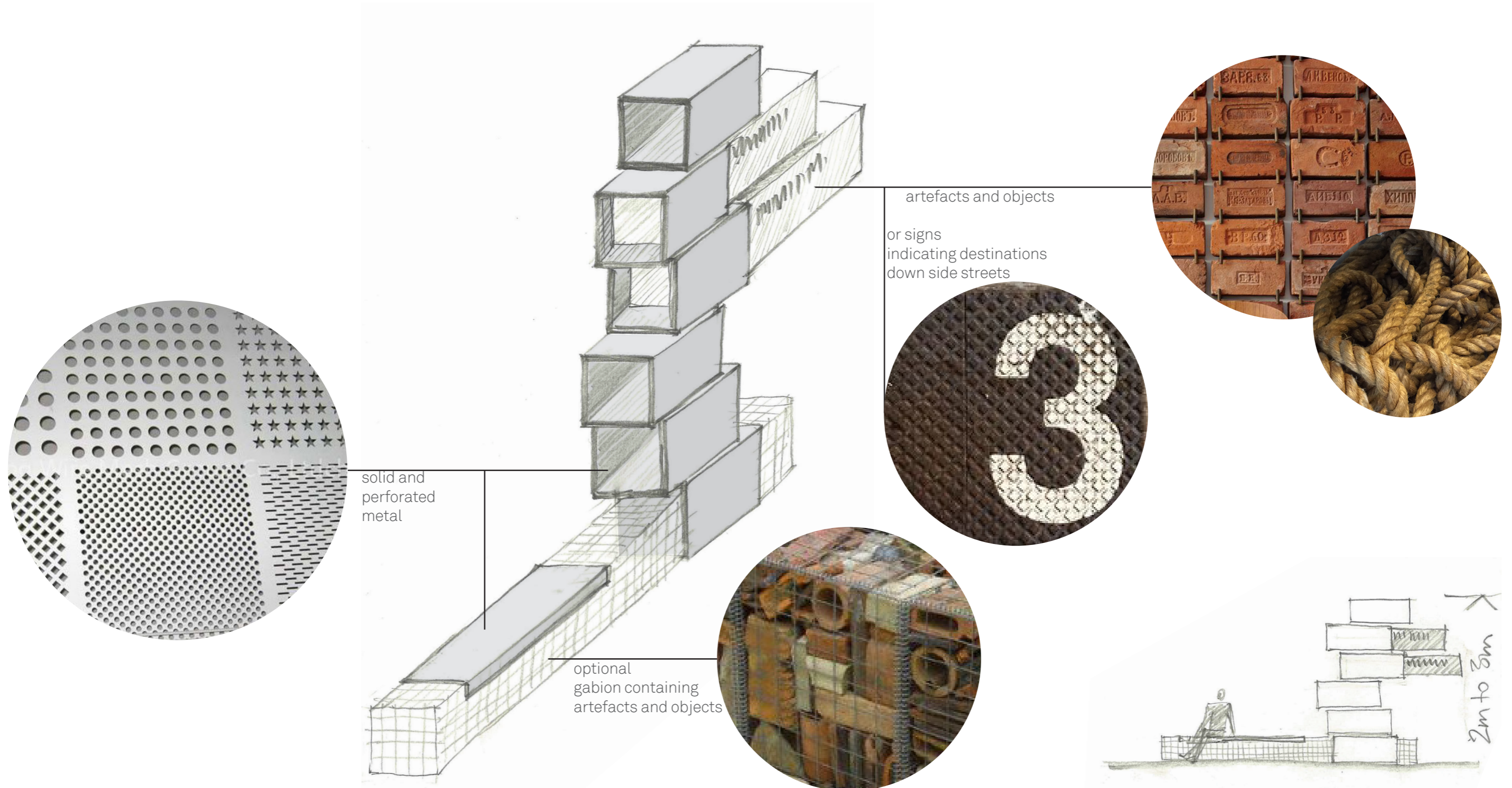
Option 2

Hub gateway



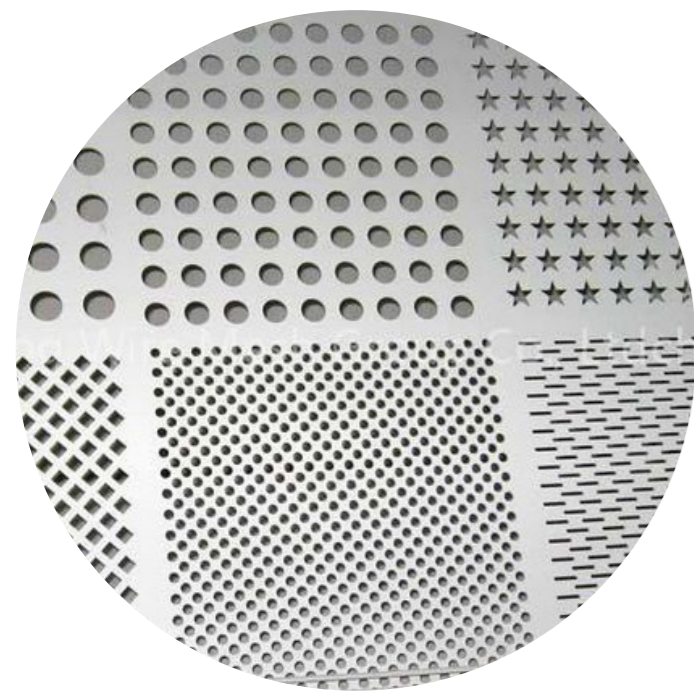
Option 2

Internal precinct gateway

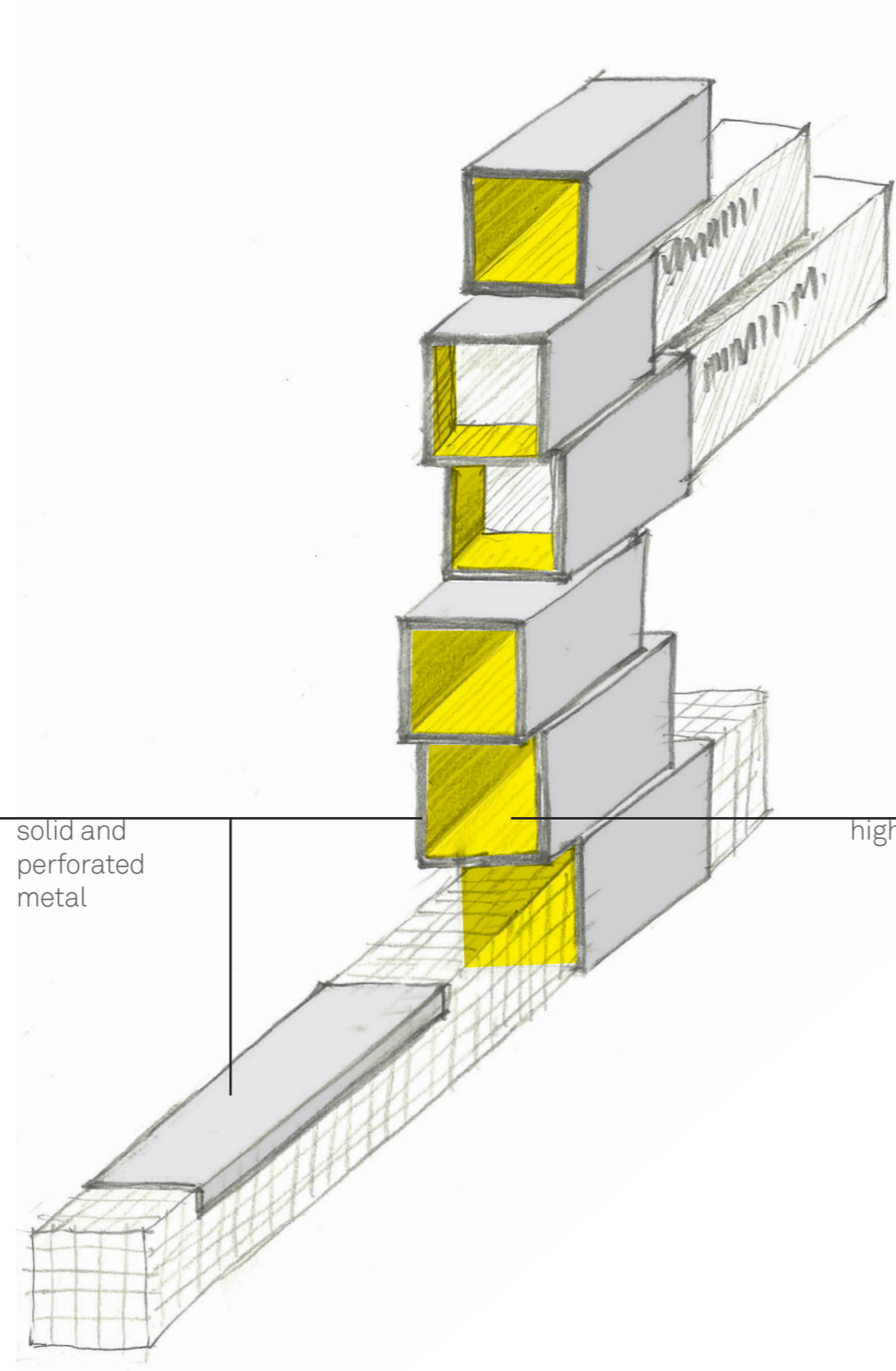


Option 2

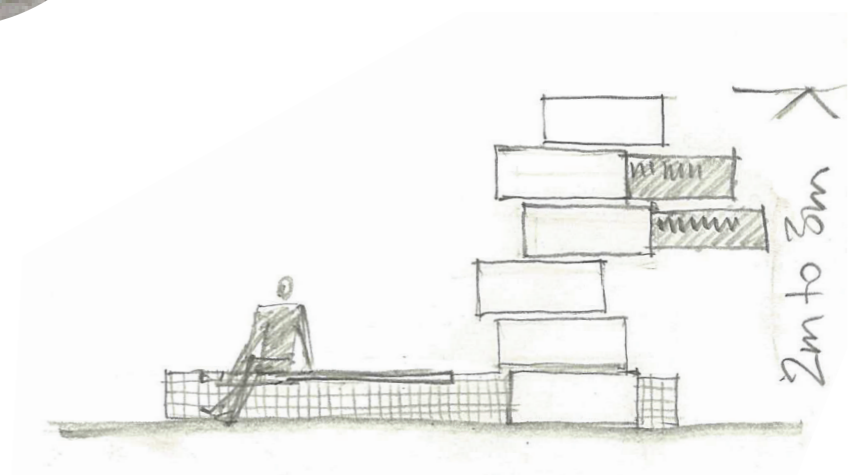
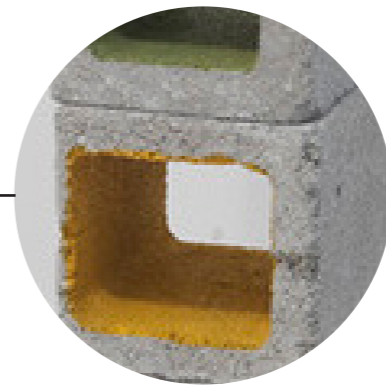
Internal precinct gateway



solid and perforated metal



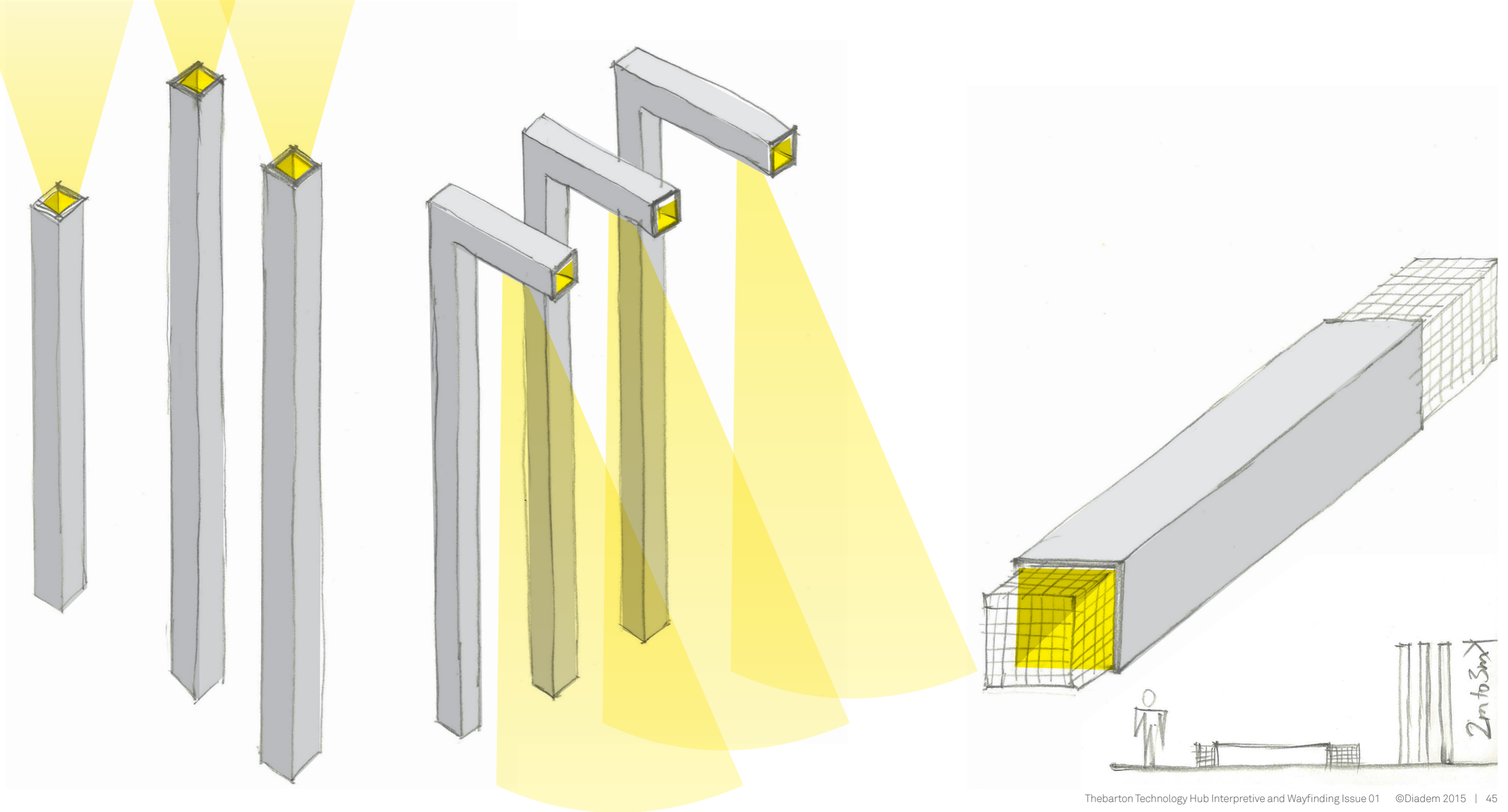
highlight colour



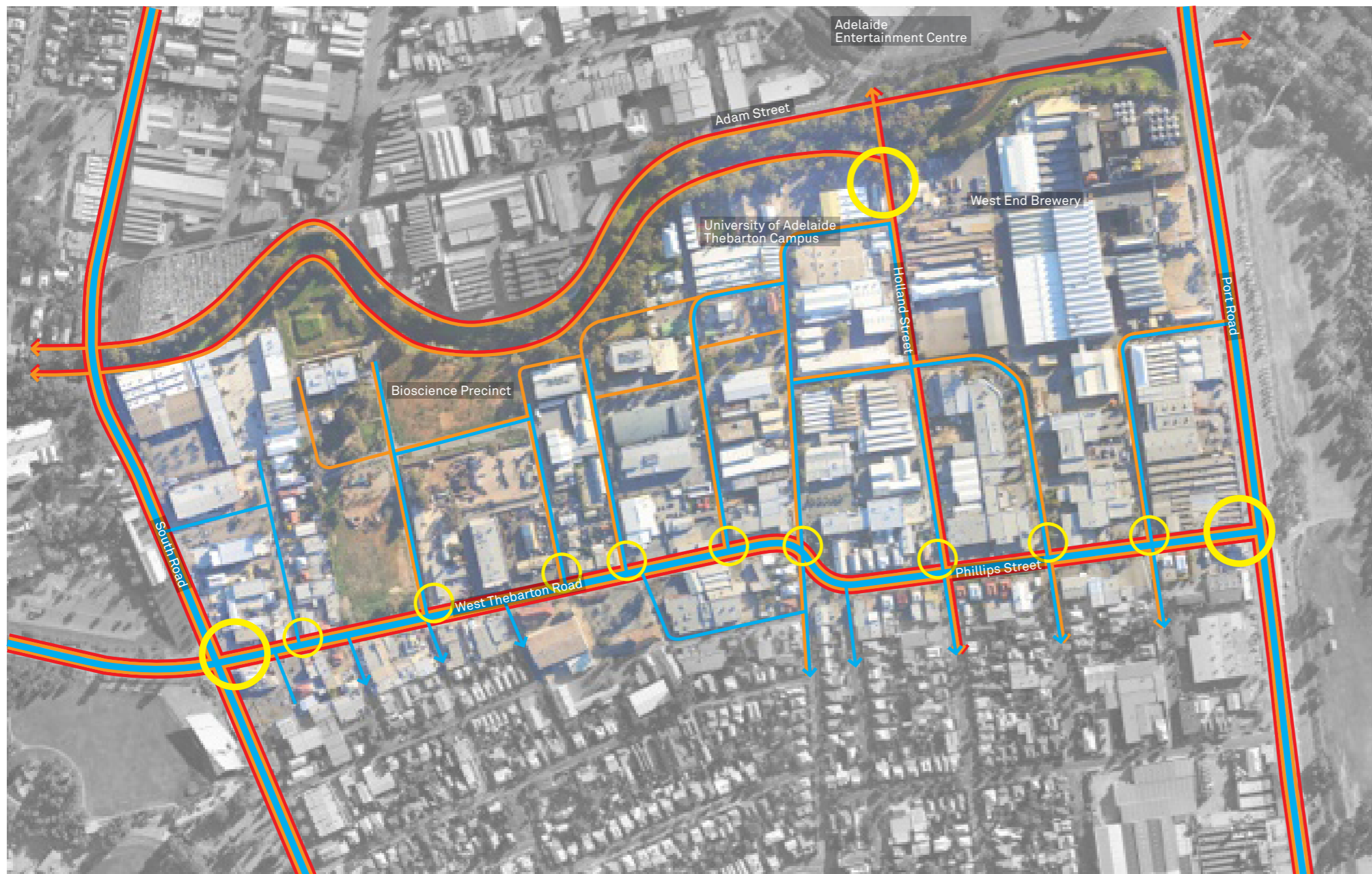
Option 2






Urban elements

Lights and seats

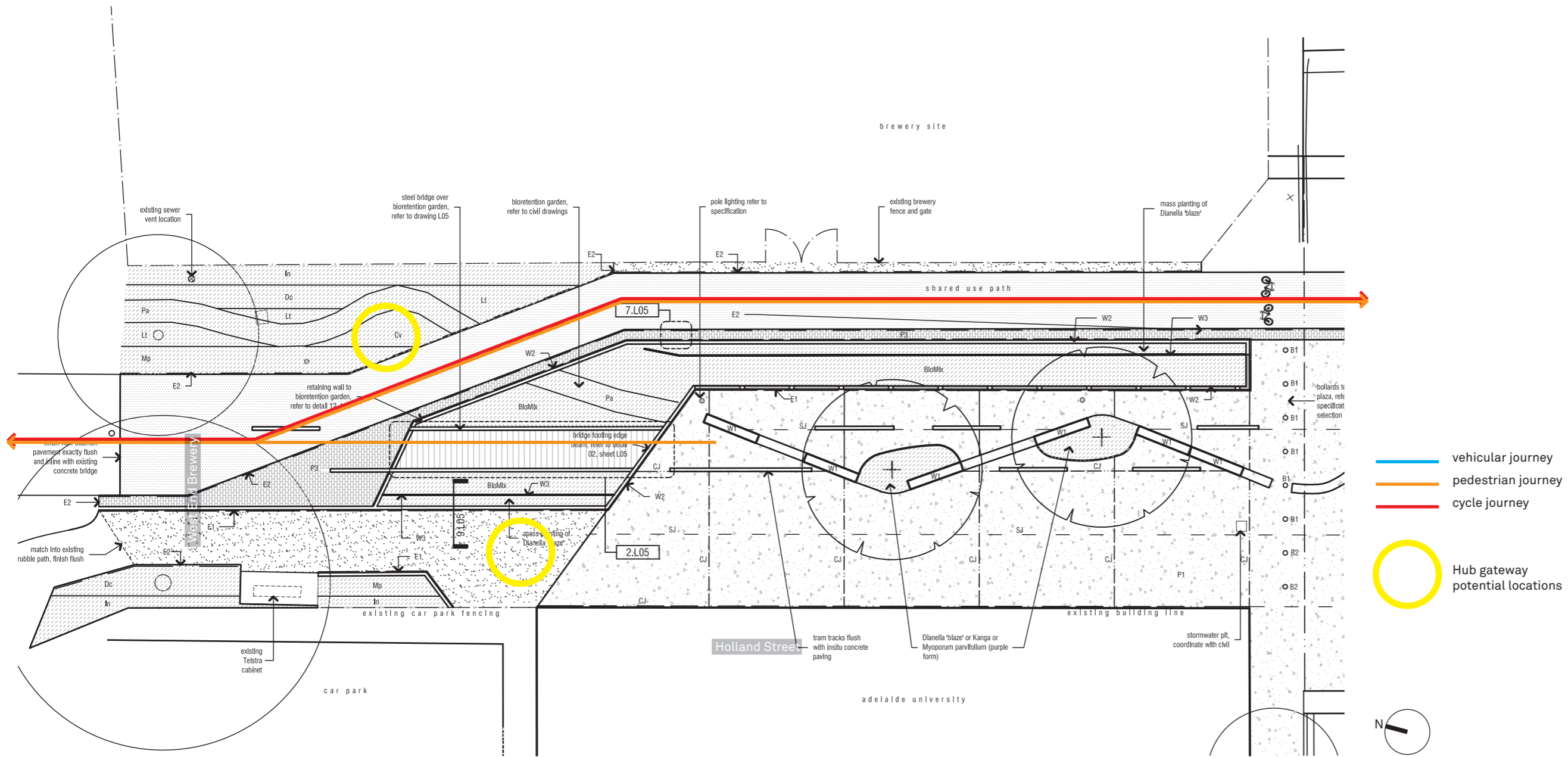


Location plan



-  vehicular journey
-  pedestrian journey
-  cycle journey
-  Hub gateway
-  Internal precinct gateway

Location plan



- vehicular journey
- pedestrian journey
- cycle journey
- Hub gateway potential locations



Melbourne
Sydney
Brisbane
Adelaide
Auckland
Hong Kong

diadem.com.au

