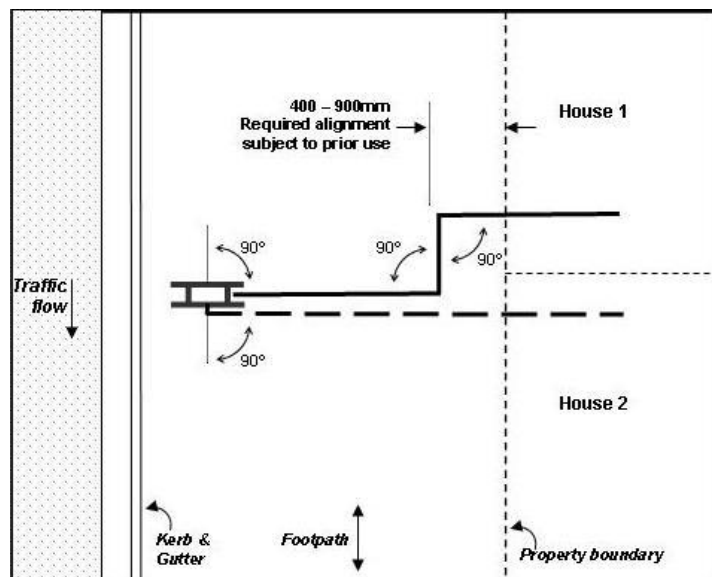


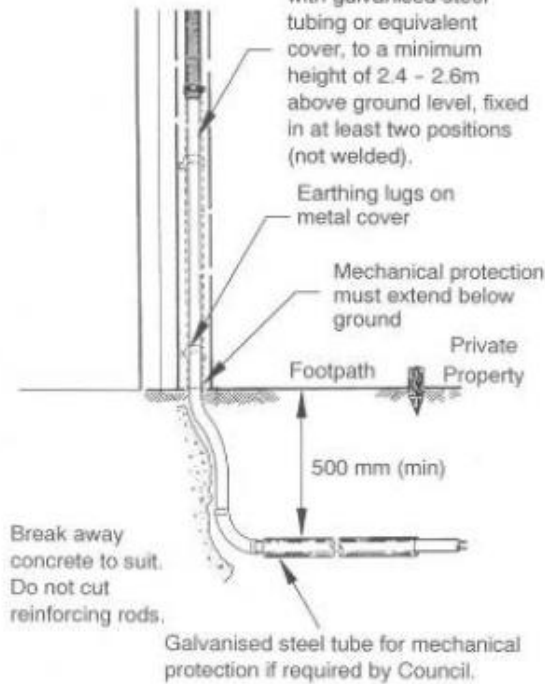
## Underground Consumer Mains Installation Conditions

1. The Applicant is responsible for obtaining information on the location of underground pipes and cables from communications, gas, water and electricity providers. Plans can be requested via the Dial Before You Dig website – [www.dialbeforeyoudig.com.au](http://www.dialbeforeyoudig.com.au) or phone enquiries to 1100.
2. Cables shall be laid in accordance with the current ETSA Utilities Service and Installation Rules, ETSA Utilities Notice to Electrical Workers and Standards Australia AS/NZS3000 - Wiring Rules.
3. The underground cable is to be laid at a minimum depth of 600mm below the present or future footway surface, whichever is the lower. The alignment of the underground service shall be parallel to and a distance not less than 400 mm, nor more than 900 mm from the property line.
4. The underground cables shall be laid across the footway at 90° to the property line. Cables must not be laid underground diagonally across the footway.
5. Galvanised steel tubing is required to be installed for mechanical protection of underground consumer mains cables at the horizontal installed depth across Council land.
6. All cutting of concrete or bitumen footways must be carried out using a saw in straight lines. Concrete slab footpaths are to be cut to the nearest control joint. Concrete block paving is to be lifted and stacked neatly so as not to cause a hazard to the public.
7. During excavations, tree roots of 50mm in diameter or less may be cut if necessary by using a sharp pruning tool such as secateurs or a hand saw. Larger roots must not be cut unless inspected by Council to determine their contribution to the trees stability.
8. The excavation is to be back-filled in layers using selected material and compacted such that the compacted and finished surface matches the adjacent footpath level and is to be at least to the standard of the existing surface in thickness and quality of materials. The Applicant must remove excess spoil and leave the site clean and safe to the public.
9. The Applicant (or by default, the property owner), shall maintain adequate protection of all his/her work from damage and shall protect the Council and public from injury or loss arising from this work. The erection of signs, barricades, reflective bollards, etc. adjacent to the excavation, may be necessary to provide adequate protection.
10. The Council shall not accept responsibility for any damage or claims arising from the laying of the service, or from the opening or breaking up of the footpath surface.
11. The Council will accept no responsibility for any damage to the electrical service from any cause whatsoever.
12. Any future alterations necessary through road widening or other works shall be carried out at no cost to the Council.
13. The electrical service shall remain during the pleasure of the Council.

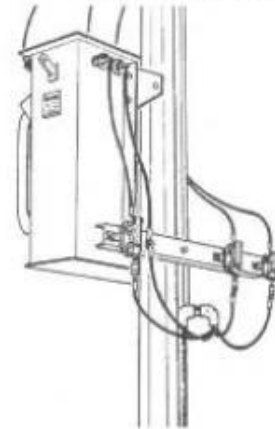
## Cable Installation Alignment



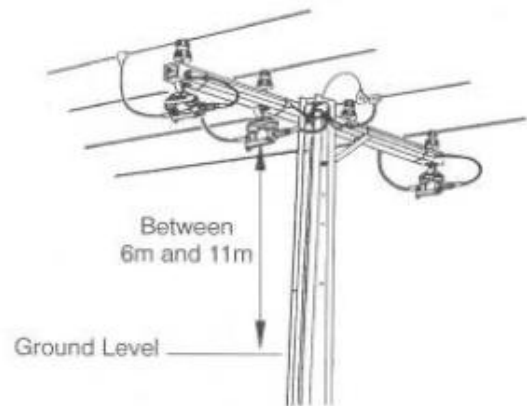
### Service Detail



### Option 1 Transformer Pole



### Option 2 Line Pole



### NOTES

1. All consumers mains and enclosures must comply with AS/NZS 3000.
2. Exposed consumer's mains and conduits must be ultra violet protected.
3. Installation of conduit and cables above 2.5 m on the pole must be installed by ETSA Utilities' personnel.
4. Connections to fuses must be such that no excessive stress is placed on the fuse.
5. Termination of consumer's mains - lugs with M12 hole to be supplied by the customer.
6. Conduit must be protected from entry of water.
7. Consumer's mains in Council property must be approved by Council and installed in accordance with Council Requirements.

Appendix 1  
**A-1.5**

© ETSA Utilities

## LV ISOLATORS ON A POLE

Service & Installation Rules

Mar 2009