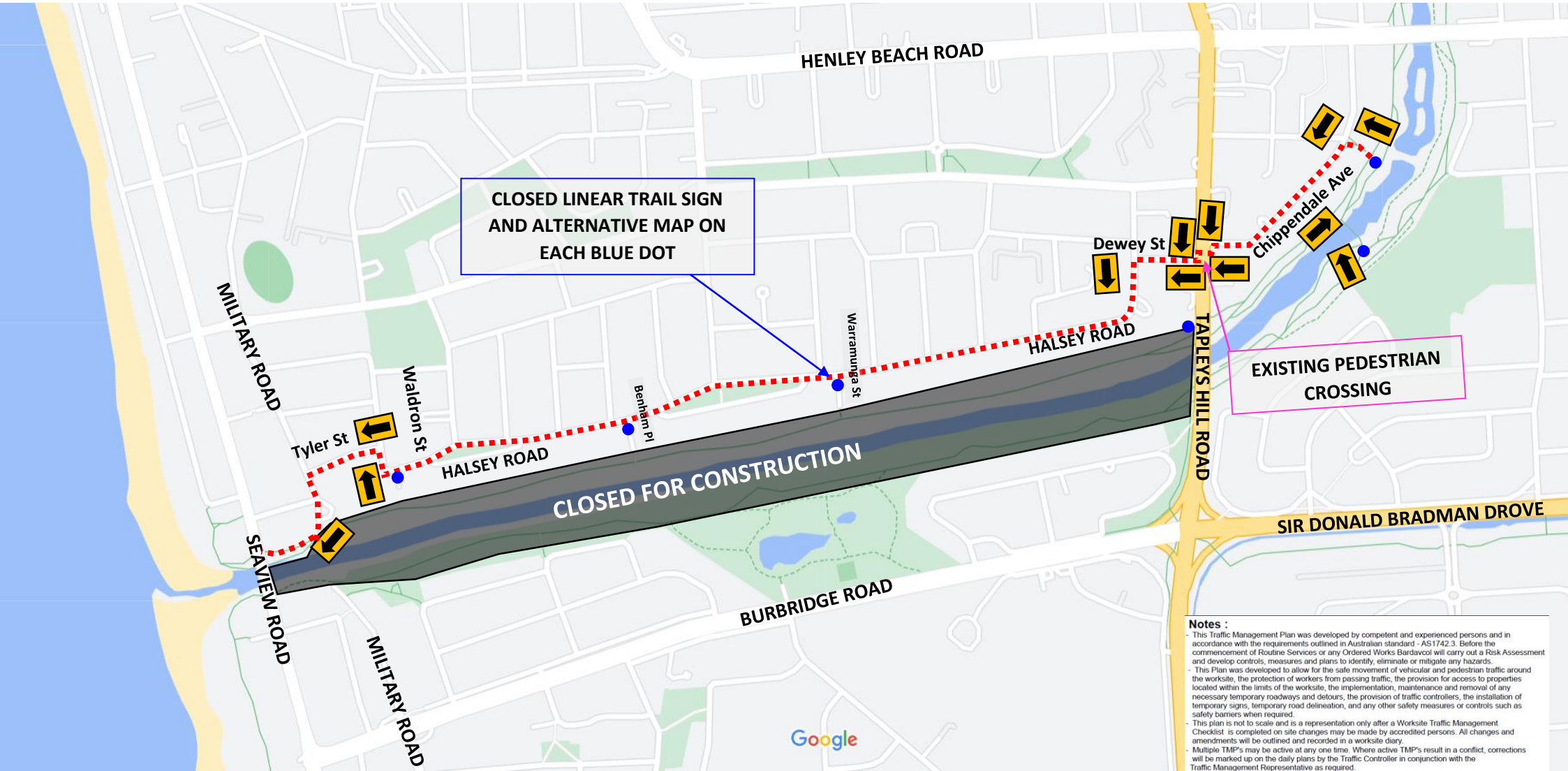


TMP FROM LINEAR TRAIL TO HENLEY BEACH

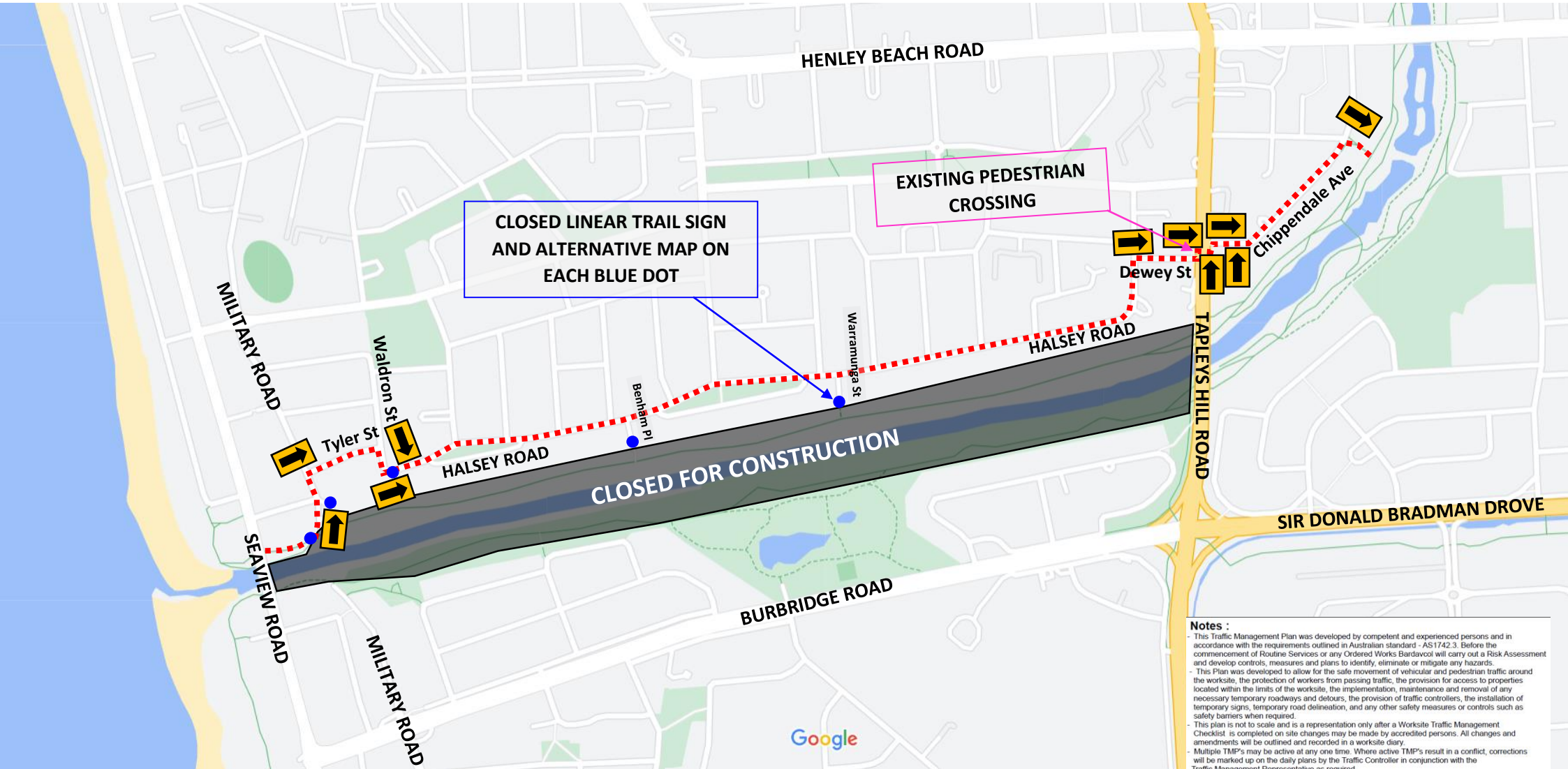


Notes :

- This Traffic Management Plan was developed by competent and experienced persons and in accordance with the requirements outlined in Australian standard - AS1742.3. Before the commencement of Routine Services or any Ordered Works Bardavcol will carry out a Risk Assessment and develop controls, measures and plans to identify, eliminate or mitigate any hazards.
- This Plan was developed to allow for the safe movement of vehicular and pedestrian traffic around the worksite, the protection of workers from passing traffic, the provision for access to properties located within the limits of the worksite, the implementation, maintenance and removal of any necessary temporary roadways and detours, the provision of traffic controllers, the installation of temporary signs, temporary road delineation, and any other safety measures or controls such as safety barriers when required.
- This plan is not to scale and is a representation only after a Worksite Traffic Management Checklist is completed on site changes may be made by accredited persons. All changes and amendments will be outlined and recorded in a worksite diary.
- Multiple TMP's may be active at any one time. Where active TMP's result in a conflict, corrections will be marked up on the daily plans by the Traffic Controller in conjunction with the Traffic Management Representative as required.

Title:	BREAKOUT CREEK STAGE 3 REDEVELOPMENT		
Location:	Linear Trail		Reference: 1851
Author:	Liam Gill	Date: 15/07/2022	
Drawing No.:	BARD – TMP – 1851 - 09	Revision: 01	Sheet No.: 01

TMP FROM HENLEY BEACH TO LINEAR TRAIL



Notes :

- This Traffic Management Plan was developed by competent and experienced persons and in accordance with the requirements outlined in Australian standard - AS1742.3. Before the commencement of Routine Services or any Ordered Works Bardavcol will carry out a Risk Assessment and develop controls, measures and plans to identify, eliminate or mitigate any hazards.
- This Plan was developed to allow for the safe movement of vehicular and pedestrian traffic around the worksite, the protection of workers from passing traffic, the provision for access to properties located within the limits of the worksite, the implementation, maintenance and removal of any necessary temporary roadways and detours, the provision of traffic controllers, the installation of temporary signs, temporary road delineation, and any other safety measures or controls such as safety barriers when required.
- This plan is not to scale and is a representation only after a Worksite Traffic Management Checklist is completed on site changes may be made by accredited persons. All changes and amendments will be outlined and recorded in a worksite diary.
- Multiple TMP's may be active at any one time. Where active TMP's result in a conflict, corrections will be marked up on the daily plans by the Traffic Controller in conjunction with the Traffic Management Representative as required.

Title:	BREAKOUT CREEK STAGE 3 REDEVELOPMENT CLOSURE OF LINEAR TRAIL		
Location:	Linear Trail	Reference: 1851	
Author:	Liam Gill	Date: 15/07/2022	
Drawing No.:	BARD – TMP – 1851 - 09	Revision: 01	Sheet No.: 02